



# PASS-THROUGH DRYERS

FOR CBW®/PBW™ BATCH WASHERS AND OTHER WASHING SYSTEMS



6464





# MILNOR PASS-

## *The right sizes*

These dryers can be used with washer-extractors or with CBW®/PBW™ tunnel washers.

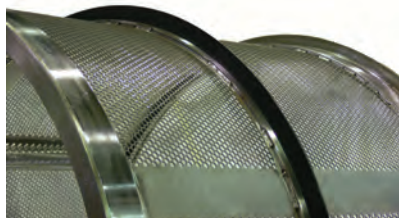
Basket volumes available are 56.8 cu. ft. (1608 L), 93 cu. ft. (2635 L), 108 cu. ft.

(3058 L), 119 cu. ft. (3373 L), 200 cu. ft. (5663 L), and 251 cu. ft. (7108 L).

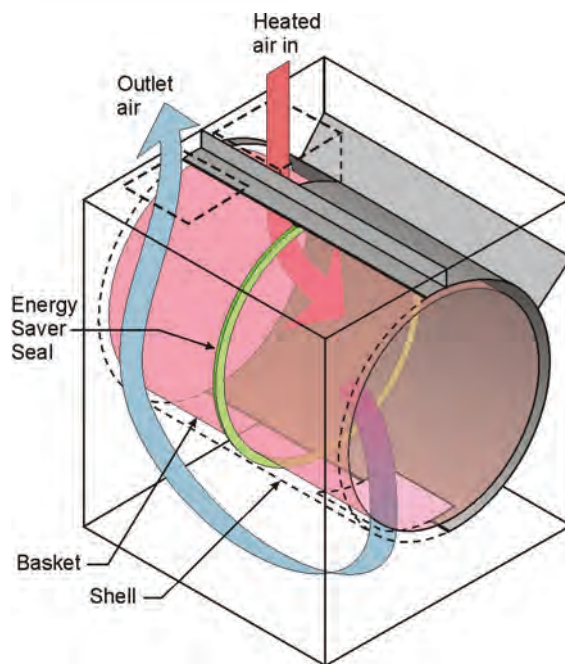
They're ideal for loads ranging from 100 lb. (45 kg) to 750 lb. (341 kg).

## *Why they save time and energy*

- Goods circulate freely—as they dry, they move to the upper end; 56.8-251 cu. ft. (1608-7108 L) cylinder enhances movement of hot air through the load.
- Huge open area—with about 65% of the perforated side sheet open, hot air flows easily through the basket.
- Unique Energy Saver Seal™ keeps air flowing through the goods without escaping around the outside of the basket.
- Fixed tilt—places the heaviest goods, which are wettest, nearest the heat entry.
- Fast unloading—no need to wait for mechanized tilting or operator attention, as the basket is always tilted toward the unload end.



*Milnor maintains proper hot airflow with a low-friction seal that ride on a polished band.*



*Unique air path means a Milnor dryer gets the most efficient use of hot air. These design features are not found on other dryers.*

## *Long-Term Efficiency*

Most dryers are efficient when new. Milnor dryers stay that way. This is possible because the seal sits circumferentially against a machined stainless steel band around the basket. Milnor seals do not let air escape around the outside of the basket, saving time and energy.

Milnor dryers have proper insulation, which prevents heat loss and improves the work environment.

## *They boost productivity*

Fast cycles mean more output. Fast turnaround from one load to the next adds even more output. To minimize turnaround delays, Milnor conveyors and shuttles allow automated loading when the dryer is ready, without operator attention. Or, if you prefer, sling loading can be employed (the fixed tilt helps goods fall to the back).

Gravity unloading is automatic, without an attendant, and there are no delays for hydraulic tilting. Pass-through design is ideal for streamlined workflow.

## *Optional recirculation is available*

Exhaust air recirculation option redirects heated exhaust air during the first part of the cycle to warm up the incoming fresh air, saving up to 10% or more of the heat energy.

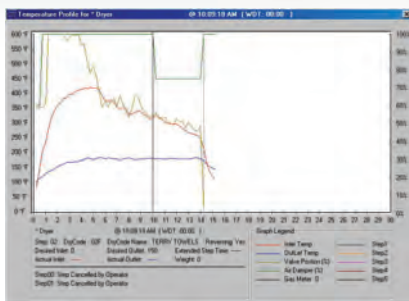


# THROUGH DRYERS



## *Control provides efficiency, information*

The microprocessor control allows field-programming of up to 200 drying formulas, to handle both full and partial loads for 100 different types of goods. Inlet and outlet temperatures may be programmed to optimize drying times.



Modulating gas valve can maintain an inlet or outlet temperature within one percent of the set point (does not rely on a high-fire, low-fire scheme). Similar modulating temperature control is also available on steam models (optional extra). The control provides cooldown, self-diagnostics, plus such information as time in process, inlet and outlet temperatures, formula in progress, number of loads processed by dry code, and cumulative average drying time for each formula. Dryer controls can also be linked to a Miltdata® computer system for central programming, system monitoring and production reporting.

Additionally, laundries have the option of mounting dryer control boxes on the discharge side of the machine.

## *Dryer pod configuration is available*



*Milnor now offers innovative, time-saving dryer pod configuration.*

To see how the dryer pod works, scan this code:



## *These dryers help streamline laundry production*



Milnor dryers are pass-through machines that load at one end and discharge at the other. They form an integral part of an automated batch laundry processing system, along with a PulseFlow® batch washer or continuous batch washer, an extraction system, and transport conveyors.

These fully-automatic dryers can also be used to streamline operations with washer-extractor systems. Pass-through design allows excellent workflow, while automatic loading/unloading and drying controls reduce operator attention.

## *Automated lint removal systems*

Milnor Lint Filter (MLF) Systems are available for all Milnor pass-through dryers. This MLF operates on differential back pressure. The lint filter can air-blast itself clean at a pre-set back pressure. The control cleans the screen only when needed—optimizing dryer performance. To find out more, request an Onboard MLF Lint Filter brochure.



*MLF 1010 external lint filter has 36 ft<sup>2</sup> surface area.*



*Milnor's 6464 internal lint filter has 11.41 ft<sup>2</sup> surface area.*





## SPECIFICATIONS

PASS-THROUGH DRYERS	5050		6450		6458		6464		7676		8282	
Capacity range* - lb. (kg)	100-150	(45-68)	160-280	(72-127)	200-320	(91-145)	230-350	(105-158)	450-600	(204-273)	600-750	(272-341)
Basket volume – cu. ft. (L)	56.8	(1608)	93	(2635)	108	(3058)	119	(3373)	200	(5663)	251	(7108)
Filling Factor @ 1kg : 25L												
lb. (kg)	141	(64)	232	(105)	270	(123)	297	(135)	497	(226)	625	(284)
lb. per cu. ft.	2.5		2.5		2.5		2.5		2.5		2.5	
Basket diameter – in. (mm)	50	(1270)	64	(1626)	64	(1626)	64	(1626)	76	(1930)	82	(2083)
Basket depth – in. (mm)	50	(1270)	50	(1270)	58	(1473)	64	(1626)	76	(1930)	82	(2083)
Blower motor – HP (kW)	7.5	(5.59)	25	(18.64)	25	(18.64)	25	(18.64)	40	(30)	40	(30)
Basket drive motor – HP (kW)	1.5	(1.1)	3	(2.23)	3	(2.23)	3	(2.23)	7.5	(5.5)	10	(7.5)
Combustion air motor – HP (kW)	0.5	(.38)	2	(1.5)	2	(1.5)	2	(1.5)	1.5	(1.1)	1.5	(1.1)
Approx. overall width** - in. (mm)	67	(1702)	85	(2159)	85	(2159)	85	(2159)	108	(2743)	123	(3124)
Approx. overall depth** - in. (mm)	95.5	(2426)	109.2	(2774)	103.38	(2626)	109.25	(2776)	142.5	(3618)	150	(3810)
Approx. overall height*** - in. (mm)	138.5	(3517)	158.25	(4022)	159	(4038)	158.75	(4035)	187.75	(4767)	196.75	(4994)
Approx. net weight* - lb. (kg)	4,000	(1814)	5190	(2353)	5,360	(2431)	5,560	(2527)	10,000	(4536)	11,600	(5262)

\*Capacity depends on type of goods--e.g., ranging from various fabrics/cotton goods to mats and wipers. \*\*With standard accessories for gas models only.

~Consult factory for 5050 (with Steam) height. Specifications and appearance are subject to change without notice. Contact factory for acoustics data.

Printed in the U.S.A.  
© Pellerin Milnor Corporation  
Brochure B22SL07001/25265



Pellerin Milnor Corporation  
P.O. Box 400, Kenner, LA, 70063-0400 USA  
Phone: 504.712.7656 • 800.469.8780  
Fax: 504.468.3094  
Email: milnorinfo@milnor.com  
www.milnor.com