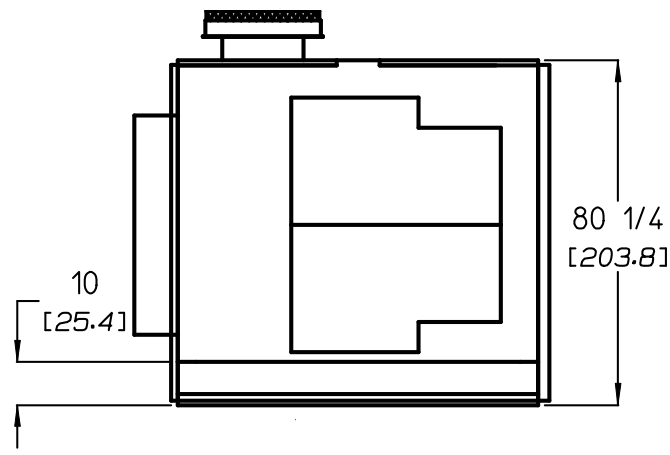
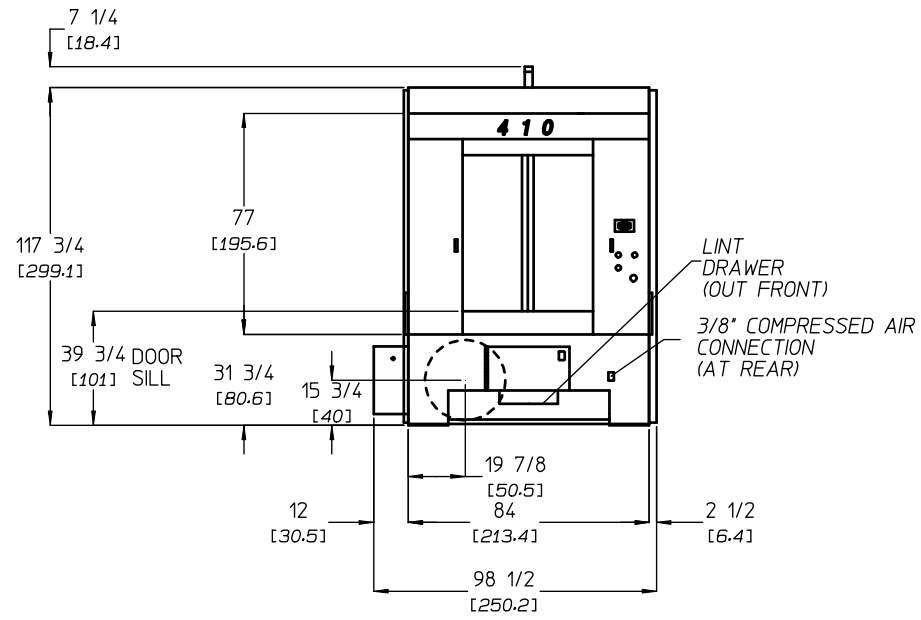


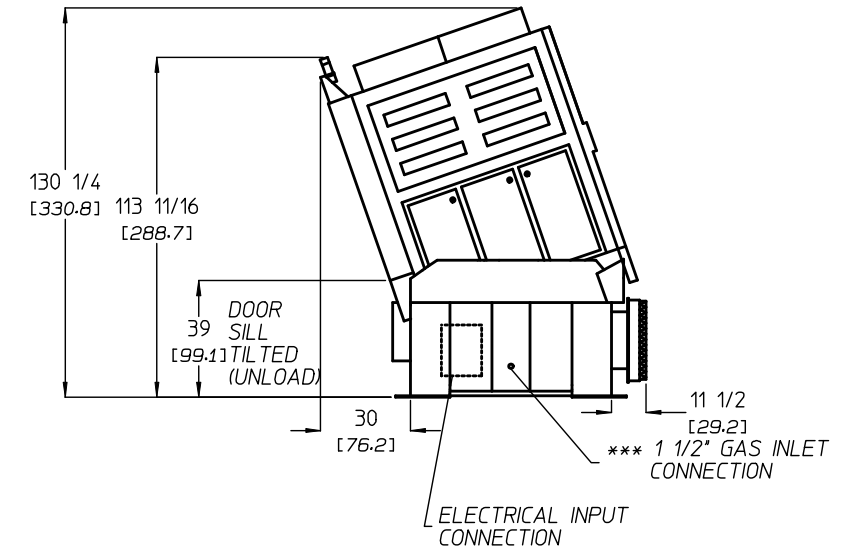
410 TILTING*
1 DOOR/FORWARD TILT
GAS MODEL



TOP VIEW



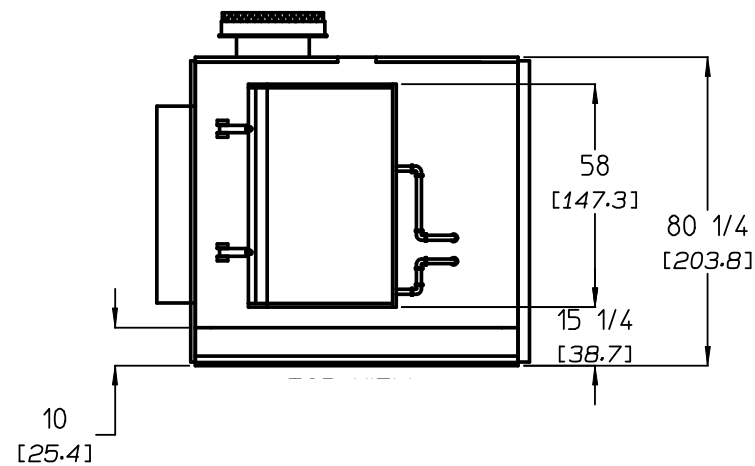
FRONT VIEW



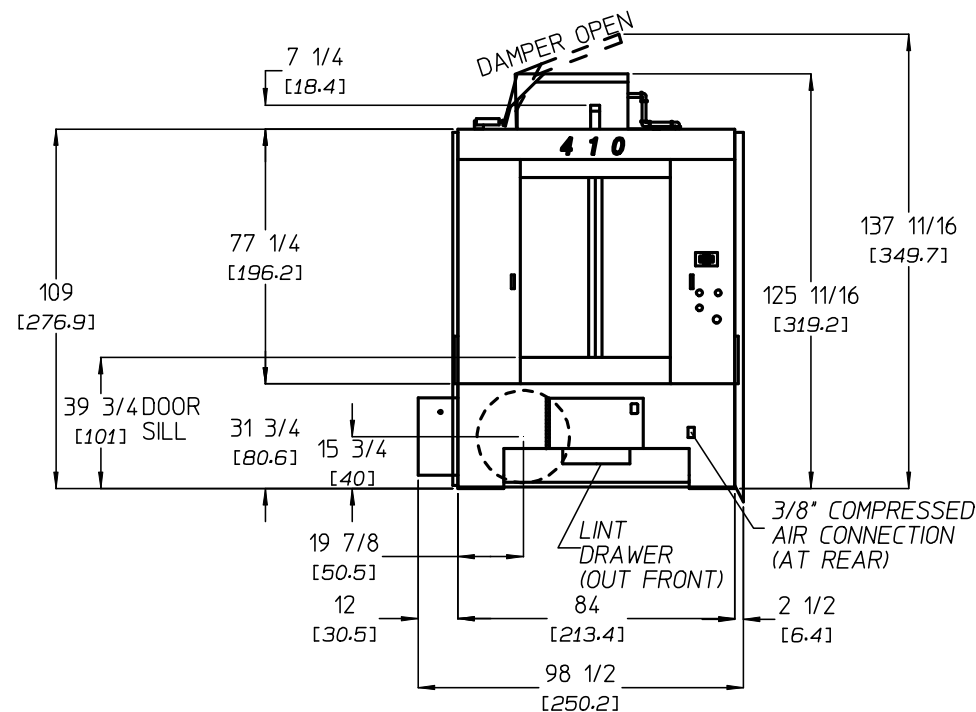
SIDE VIEW

410 TILTING*
1 DOOR/FORWARD TILT
STEAM MODEL

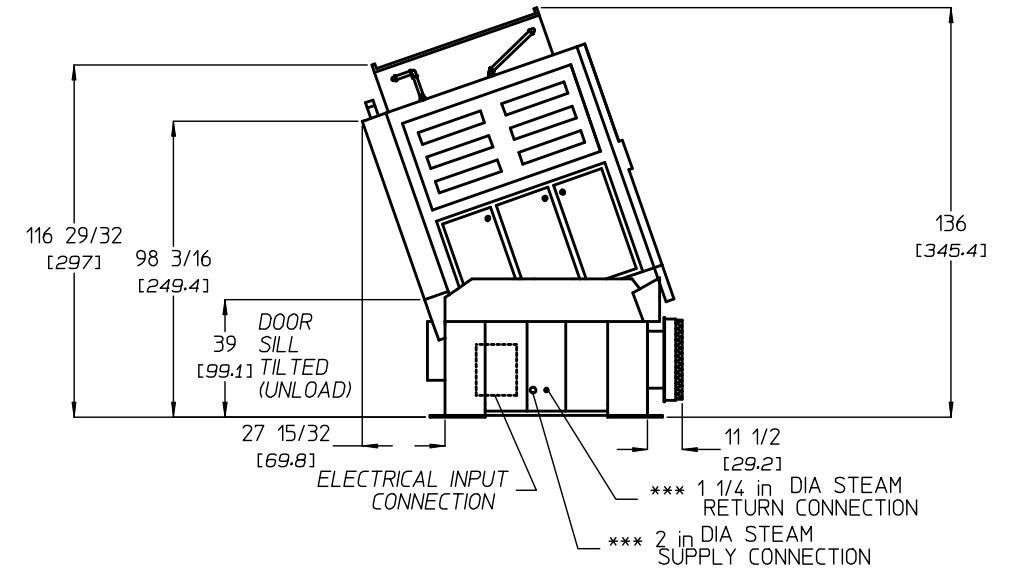
* BOTH GAS AND STEAM TILTING UNITS MUST BE SUPPLIED WITH CLEAN, DRY, REGULATED AIR AT 80 PSI ± 10 PSI (5.52 BARS ± 0.69 BARS).
** DUCTWORK SIZE VARIES WITH INSTALLATION CONDITIONS. EXHAUST STATIC PRESSURE SHOULD NOT EXCEED 0.3" WATER COLUMN (0.74 mb).
*** SIZE OF PIPING TO DRYER VARIES WITH INSTALLATION CONDITIONS. CONTACT FACTORY FOR ASSISTANCE.



TOP VIEW



FRONT VIEW



SIDE VIEW