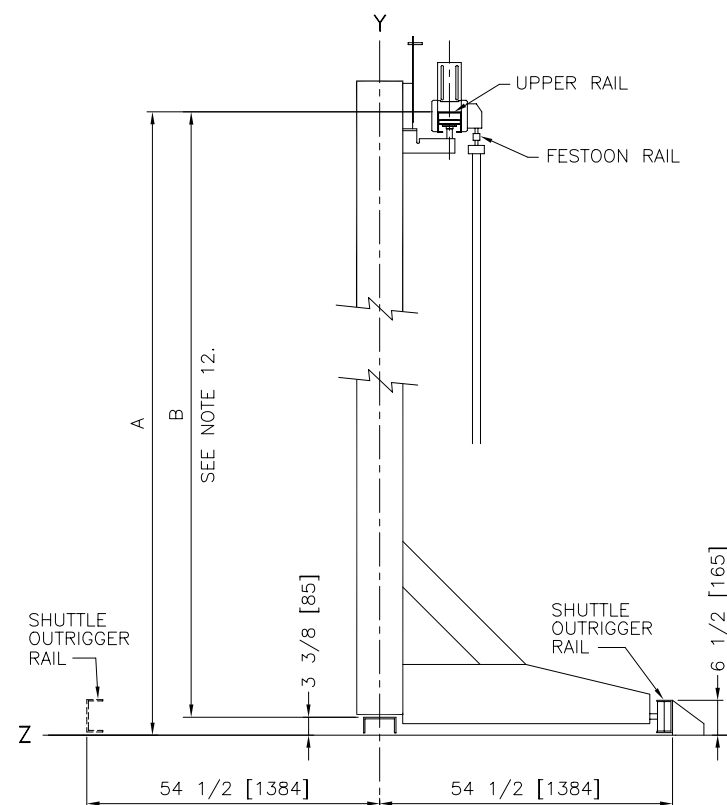
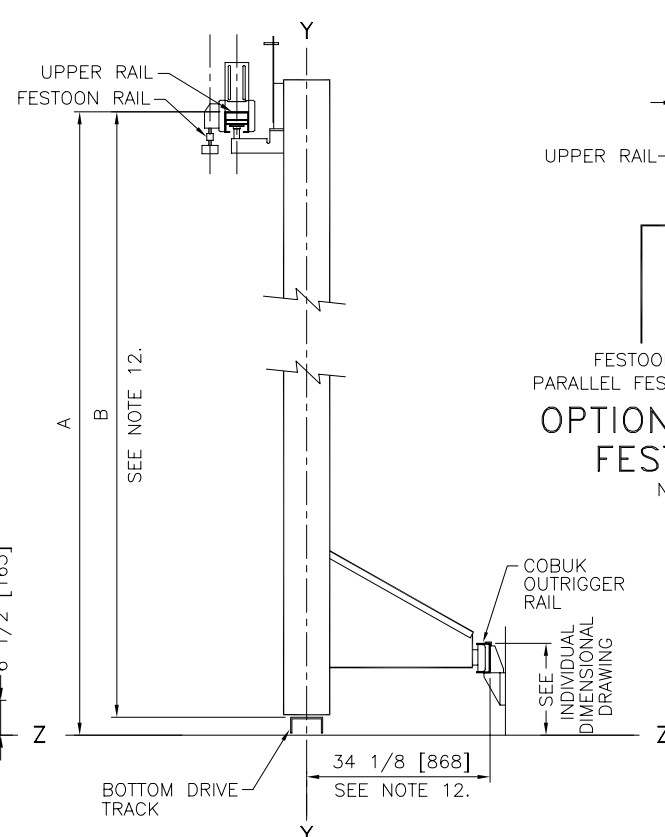


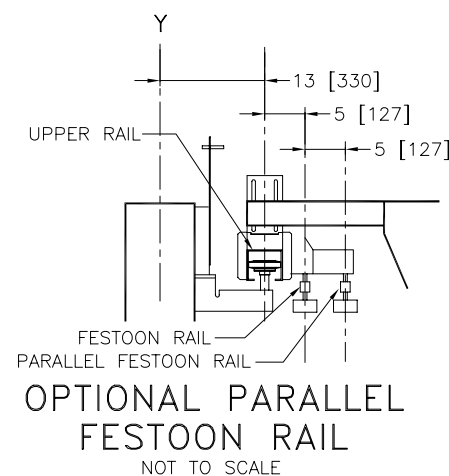
FRONT VIEW



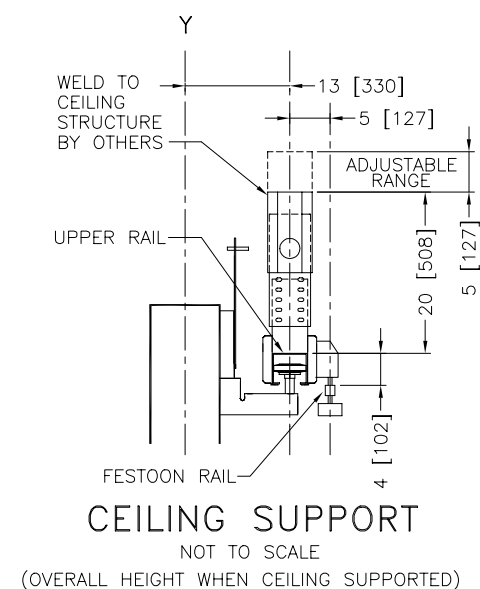
SHUTTLE RIGHT SIDE VIEW  
USE OUTRIGGER RAIL WHEN CALLED FOR BY SHUTTLE



COBUK RIGHT SIDE VIEW

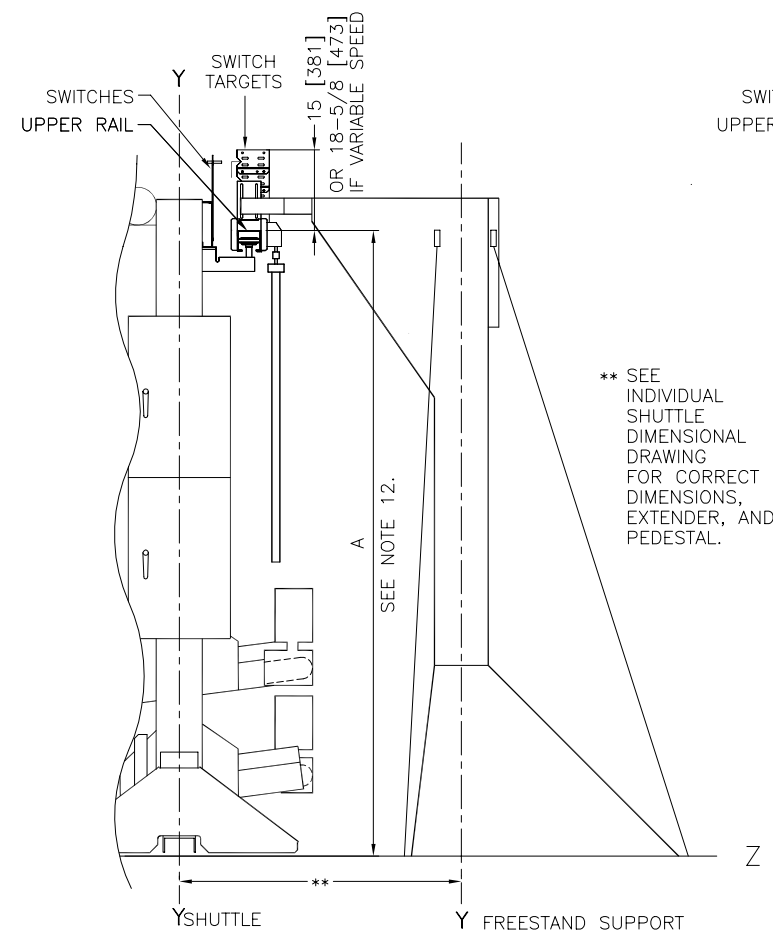


OPTIONAL PARALLEL  
FESTOON RAIL  
NOT TO SCALE

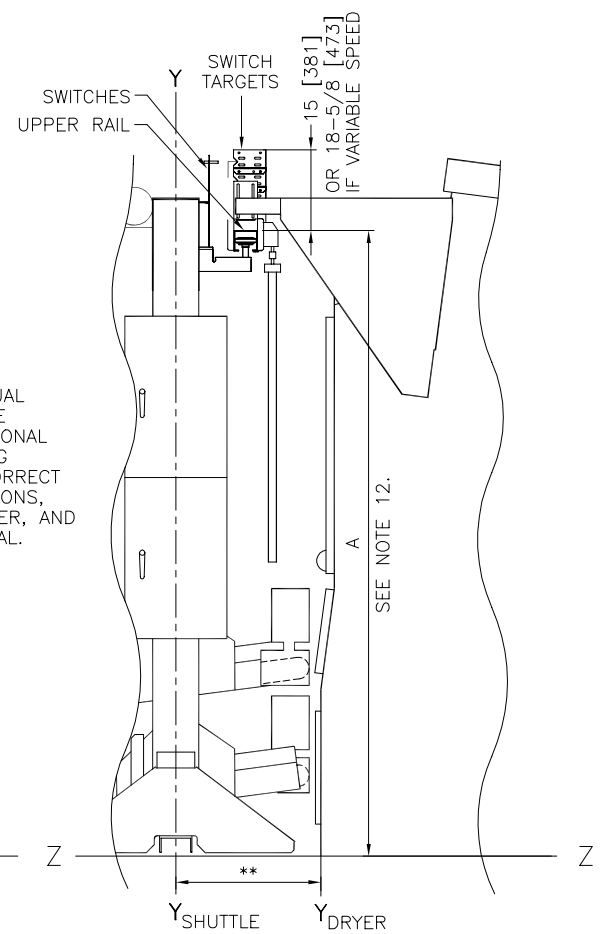


CEILING SUPPORT  
NOT TO SCALE

A = SIDE RAIL EXTENDER + 109 1/2 [2781]  
B = A - 3 3/8 [86]



FREESTAND SUPPORT



DRYER SUPPORT

- NOTES**
- CAUTION - ANY TWISTING AND/OR SKEWING OF THE RAILS MAY CAUSE EXCESSIVE WEAR OR DAMAGE OF DRIVE WHEELS AND/OR MOTOR.
  - DIMENSIONS MUST BE HELD WITHIN  $\pm 1$  [25] ALONG THE ENTIRE RAIL LENGTH.
  - SWAY BRACES ARE RECOMMENDED FROM CEILING MOUNTED RAIL SUPPORT. SWAY BRACE DESIGN AND HARDWARE IS NOT THE RESPONSIBILITY OF PMC.
  - CEILING MOUNTED RAIL SUPPORTS MAY BE USED TO SUPPORT RAIL FROM CEILING. FIELD INNOVATION IS REQUIRED, INCLUDING VERIFICATION BY COMPETENT OTHER PERSONS THAT THE CEILING IS ADEQUATE TO SUPPORT AND STEADY THE LOAD. THIS IS NOT THE RESPONSIBILITY OF PMC.
  - FOR RAIL INSTALLATION, BOTH UPPER SUPPORT RAIL AND LOWER GUIDE RAIL MUST BE SUPPORTED EVERY 84 [2134] OF LINEAL RAIL.
  - WHENEVER CLEARANCE REQUIREMENTS PERMIT, THE DRYER MOUNTED SUPPORT BRACKET FOR THE SUPPORT RAIL IS SHIPPED PREASSEMBLED ON THE DRYER.
  - DISTANCE BETWEEN RAILS, RELATIVE POSITIONING AND HEIGHT OFF FLOOR VARIES WITH MACHINE SPECIFICATION FOR EACH INSTALLATION. SEE INTERFACING DIMENSIONAL DRAWING.
  - AS OF THIS WRITING, THE MINIMUM CLEARANCE REQUIRED BY U.S. NATIONAL ELECTRIC CODES, FROM ELECTRIC BOX TO ANY OBJECT IS:  
36 [914] IF OBJECT IS AN UNGROUNDED (INSULATED) WALL.  
42 [1067] IF OBJECT IS A GROUNDED WALL (ie. BARE CONCRETE, BRICK, ETC.).  
48 [1219] IF OBJECT IS ANY LIVE PART.  
CHECK LOCAL ELECTRIC CODES FOR FURTHER RESTRICTIONS.
  - CUSTOMER TO SUPPLY CIRCUIT BREAKER OR FUSED BRANCH CIRCUIT DISCONNECT (SAFETY) SWITCHES WITH LAG-TYPE FUSES FROM POWER SOURCE TO MACHINE. A SEPARATE GROUND WIRE MUST BE CONNECTED FROM DISCONNECT TO EQUIPMENT.
  - BASELINE "Z" IS THE SAME FOR ALL MILNOR MACHINES AND IS SHOWN ON ALL DIMENSIONAL DRAWINGS. THE DISTANCE BETWEEN BASELINE "Z" AND THE FINISHED FLOOR MAY VARY (WITH CHANGES IN FLOOR HEIGHT) AS REQUIRED TO INSURE THAT BASELINE "Z" IS HORIZONTAL AND ALL COMPONENTS REQUIRING GROUT ARE SET ON A MINIMUM 1" [25] THICK GROUT BED.
  - USE REFERENCE LINES "X", "Y", AND "Z" TO LOCATE ALL SERVICE CONNECTIONS.
  - NUMBERS IN BRACKETS [ ] DENOTE DIMENSIONS IN MILLIMETERS.
  - ALL DIMENSIONS SHOWN ARE APPROXIMATE, SUBJECT TO NORMAL MANUFACTURING TOLERANCES, AND TO OCCASIONAL CHANGES WITHOUT NOTICE THROUGH REDESIGN AND/OR RELOCATION OF COMPONENTS, ETC. DO NOT USE FOR CONSTRUCTION UNLESS CERTIFIED, AND IN NO EVENT PRE-PIPE CLOSER THAN FIVE FEET FROM MACHINE. FACTORY MUST BE CONSULTED FOR DIMENSIONS IF MACHINE IS TO BE MOVED THROUGH NARROW OR LOW CORRIDORS OR OPENINGS.
- ATTENTION**
- THE FLOOR AND/OR OTHER SUPPORT COMPONENTS MUST HAVE SUFFICIENT STRENGTH (AND RIGIDITY WITH DUE CONSIDERATION FOR NATURAL OR RESONANT FREQUENCY THEREOF) TO WITHSTAND THE FULLY LOADED WEIGHT OF THE MACHINE INCLUDING THE GOODS, THE WATER, AND ANY REPEATED SINUSOIDAL (ROTATING) FORCES GENERATED DURING ITS OPERATION. WRITE THE FACTORY FOR ADDITIONAL MACHINE DATA FOR USE BY A COMPETENT SOIL AND/OR STRUCTURAL ENGINEER.

## SHUTTLE RAILS



