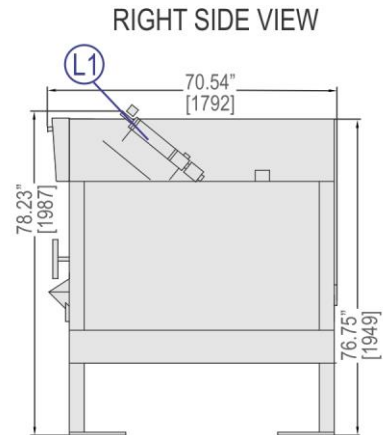
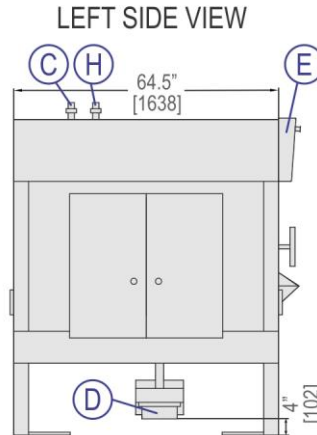
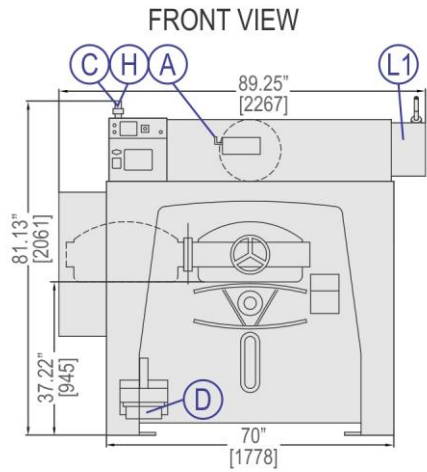


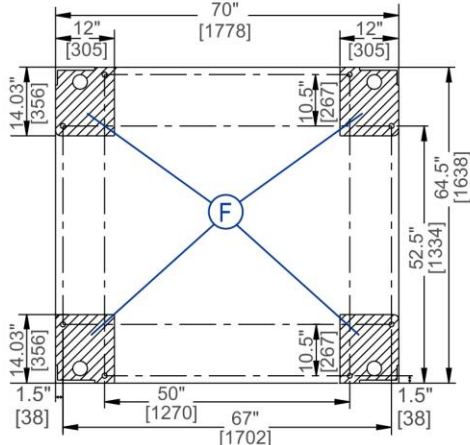
42044 WR2

220-245 LB. (100-111KG) CAPACITY
DIVIDED-CYLINDER WASHER-EXTRACTOR

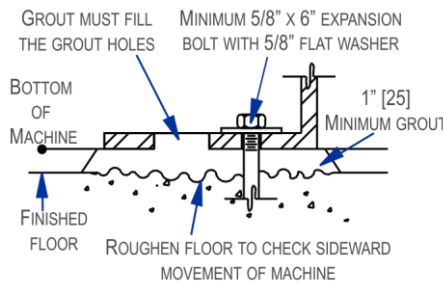
SPECIFICATION SHEET



FOUNDATION VIEW



ANCHORING DETAIL



LEGEND

| | |
|----|---|
| A | Compressed air inlet connection .25" (6 mm) NPT |
| C | Cold water inlet 1.5" (38 mm) NPT |
| D | Drain valve 8" (203 mm) diameter |
| E | Electrical connection |
| F | Anchor pads, bolt holes 1.06" (27 mm) |
| H | Hot water inlet 1.5" (38 mm) GHT |
| L1 | Peristaltic supply connection .5" (13 mm) NPT |

MECHANICAL SPECIFICATIONS

| | |
|--|--|
| Capacity – lb. (kg) | 220-245 (100-111) |
| Cylinder Diameter x Depth – in. (mm) | 42 x 44 (1067x1118) |
| Cylinder Door Area – sq. in. (sq. cm) | 224 (1445) |
| Cylinder Volume – cu. ft. (L) | 35 (999) |
| Machine Dimensions (W x D x H) – in. (mm) | 89.25 x 70.54 x 81.13 (2267 x 1792 x 2061) |
| Shipping Dimensions* (W x D x H) – in. (mm) | 76 x 91 x 89 (1930 x 2311 x 2260) |
| Motor – HP (kW) | 25 (18.64) |
| Wash Speed – RPM | 25-35 |
| Distribution Speed – RPM | 52 |
| Extraction Speeds – RPM | 240-710 |
| Extraction G-Force | 300 |
| Static Weight – lb. ◇* | 7294 (3309) |
| Max. Dynamic Load RMS – lb ◇* | 908.46 |
| Frequency (Hz)* | 11.67 |
| Water Pressure ^(Required) – psi (bar) | 30-65 (2.06-4.48) |
| Water Valve Cv Rating at 72°F (22°C) | 75 (283.9) |

ELECTRICAL SPECIFICATIONS

| Voltage | Running Amps | Fuse (Amps) | Circuit Breaker (Amps) |
|-------------|--------------|-------------|------------------------|
| 208/3/60 | 39 | FRN50 | 100 |
| 220/3/50-60 | 38 | FRN50 | 90 |
| 240/3/60 | 35 | FRN45 | 80 |
| 380/3/50-60 | 24 | FRS30 | 60 |
| 400/3/50 | 23 | FRS30 | 50 |
| 415/3/50 | 22 | FRS25 | 50 |
| 480/3/60 | 20 | FRS25 | 40 |
| 600/3/60 | 16 | FRS20 | 35 |

See Fuse and Wire Size manual MAEFUSE1BE for safety information.

▼ See dimensional drawing for complete details.

◇ It is the sole responsibility of the owner/user to assure that the floor and/or any other supporting structure exceeds not only all applicable building codes, but also that the floor and/or any other supporting structure for each washer-extractor or group of washer-extractors has sufficient strength and rigidity (i.e., a natural or resonant frequency many times greater than the rotational machine speed with a reasonable factory of safety) to support the weight of all the fully loaded machine(s) including the weight of the water and goods, and including the published 360° rotating sinusoidal RMS forces that are transmitted by the machine(s). Contact the factory for additional machine data for use by a structural engineer.

*Contact factory for 42044 WR3 details.



42044 WR2

220-245 LB. (100-111KG) CAPACITY
DIVIDED-CYLINDER WASHER-EXTRACTOR

SPECIFICATION SHEET

Standard Features:

- Split pocket cylinder
- AUTOSPOT™ cylinder positioner
- MilTouch-EX™ touchscreen controller
- Color graphic display
- Single-motor inverter drive
- Air-operated valves
- Programmable overnight bath soak
- Programmable water temperature for each bath
- Programmable Air-Operated steam injection
- Hydro-Cushion™ suspension
- Spherical roller bearings
- Large cylinder perforations
- Fifteen (15) liquid chemical injection ports
- Control reads in English/second language

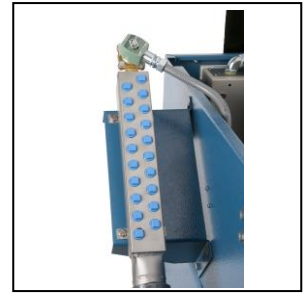


Optional Features:

- 5 compartment flushing supply injector
- Prison package
- Rotated drain 90°

Why Purchase Milnor?

- HYDRO-CUSHION™ is a unique suspension system utilizing a rugged steel frame and spring-hydraulic units with heavy fluid damping. **BENEFIT: Reduces objectionable vibration.**
- MilTouch-EX™ touch screen control, utilizing resistive touch screen technology and full VGA resolution, has a clear and informative display which shows current machine status info including total formula time and time elapsed. Formulas can be developed on a PC, saved to USB external memory and uploaded with a screen touch. Controller also provides intuitive fault diagnosis and relevant troubleshooting suggestions. **BENEFIT: Fewer operator errors.**
- 322-G high extract provides excellent moisture removal. Lower extract speeds are available for uniforms, delicate textiles and blended fabrics. **BENEFIT: Better extraction saves dryer fuel.**
- 20 liquid chemical ports, 15 signals, and optional 5 compartment supply injector. **BENEFIT: Promotes consistency and allows flexibility.**
- Larger cylinder perforated-area generates *better wash quality, better rinsing and better extraction.* **BENEFIT: Better extraction saves dryer fuel.**
- Faster process times reduce fabric wear, promoting *longer linen life!* **BENEFIT: Saves linen replacement costs.**
- Superior product support through local, highly-skilled dealers. **BENEFIT: Faster repairs mean less downtime.**



Safe chemical injection



Superior cylinder design



MilTouch-EX™
touchscreen control

Contact Milnor for your local, authorized dealer:

Pellerin Milnor Corporation
PO Box 400 • Kenner, LA 70063
t: 504-467-9591 • f: 504-468-3094

