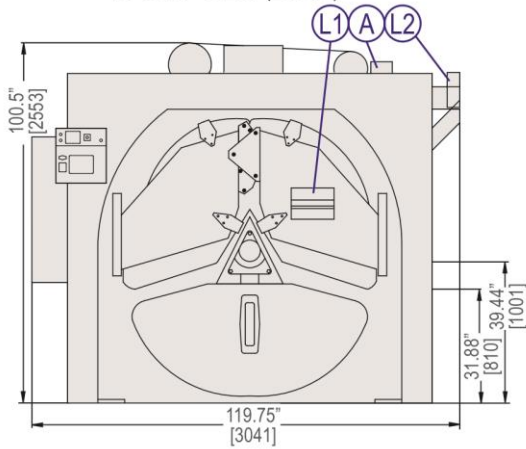


72044 WR2

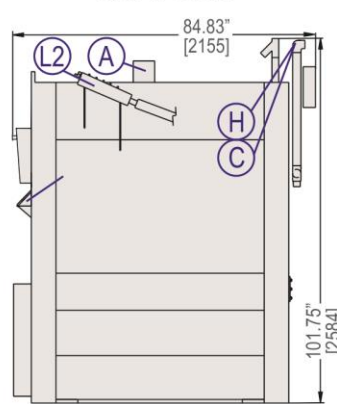
**650-725 LB. (295-330KG) CAPACITY
DIVIDED-CYLINDER WASHER-EXTRACTOR**

SPECIFICATION SHEET

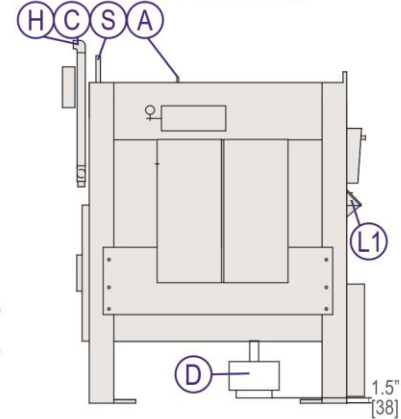
FRONT VIEW (LOAD)



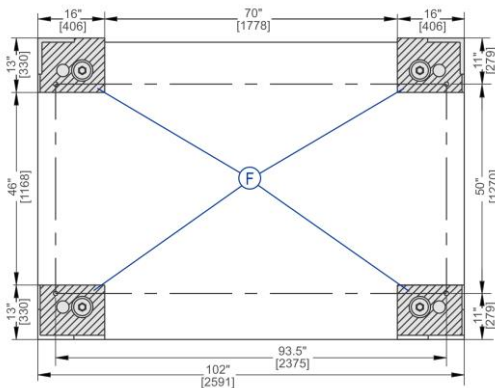
RIGHT VIEW



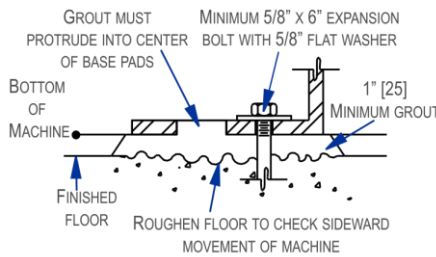
LEFT SIDE VIEW



FOUNDATION VIEW



ANCHORING DETAIL



LEGEND

A	Compressed air inlet connection .25" (6 mm) NPT
C	Cold water inlet 2" (51 mm) NPT
D	Drain valve 10" (254 mm) diameter
F	Foundation base pads
H	Hot water inlet 2" (51 mm) GHT
L1	Peristaltic supply connection
L2	Soap chute
S	Steam inlet connection 1.25" (32 mm) NPT

MECHANICAL SPECIFICATIONS

Capacity – lb. (kg)	650-725 (295-330)
Cylinder Diameter x Depth – in. (mm)	72 x 44 (1829x1118)
Cylinder Door Area – sq. in. (sq. cm)	855 (5516)
Cylinder Volume – cu. ft. (L)	104 (2945)
Machine Dimensions (W x D x H) – in. (mm)	119.75x84.83x101.75 (3041x2155x2584)
Shipping Dimensions (W x D x H) – in. (mm)	91 x 127 x 110 (2311x3225x2794)
Motors – HP (kW)	10, 7.5, 20, 15 (7.45, 5.59, 14.91, 11.18)
Wash Speed – RPM	26
Distribution Speed – RPM	45
Extraction Speeds – RPM	220-535
Extraction G-Force	292
Static Weight – lb. (kg) ◇	21951 (9956)
Max. Dynamic Load RMS – lb. (kg) ◇	2675.37 (1213.52)
Frequency (Hz)	8.92
Water Pressure ^(Required) – psi (bar)	10-75 (0.68-5.17)
Water Valve Cv Rating at 72°F (22°C)	265 (1003)

ELECTRICAL SPECIFICATIONS

Voltage	Running Amps	Fuse (Amps)	Circuit Breaker (Amps)
208/3/60	60	FRN110	200
220/3/50-60	56.5	FRN100	200
240/3/60	51.5	FRN100	200
380/3/50-60	33	FRS60	125
400/3/50	31	FRS60	125
415/3/50	30	FRS60	100
480/3/60	26	FRS50	90
600/3/60	21	FRS40	70

See Fuse and Wire Size manual MAEFUSE1BE for safety information.

▼ See dimensional drawing for complete details.

◇ It is the sole responsibility of the owner/user to assure that the floor and/or any other supporting structure exceeds not only all applicable building codes, but also that the floor and/or any other supporting structure for each washer-extractor or group of washer-extractors has sufficient strength and rigidity (i.e., a natural or resonant frequency many times greater than the rotational machine speed with a reasonable factory of safety) to support the weight of all the fully loaded machine(s) including the weight of the water and goods, and including the published 360° rotating sinusoidal RMS forces that are transmitted by the machine(s). Contact the factory for additional machine data for use by a structural engineer.



72044 WR2

650-725 LB. (295-330KG) CAPACITY
DIVIDED-CYLINDER WASHER-EXTRACTOR

SPECIFICATION SHEET

Standard Features:

- Rapid Load split pocket cylinder
- AUTOSPOT™ cylinder positioner
- MilTouch-EX™ programmable controller
- Full-color touch screen
- Air-operated valves
- Programmable overnight bath soak
- Programmable water temperature for each bath
- Programmable Air-Operated steam injection
- Hydro-Cushion™ suspension
- Spherical roller bearings
- Large cylinder perforations
- Twenty (20) liquid chemical injection ports
- Control reads in English/second language



Optional Features:

- 5 compartment flushing supply injector

Why Purchase Milnor?

- With Rapid Load split pocket cylinder (with only a single partition), both pockets are open at one time for loading. **BENEFIT: Faster loading and greater lift and drop action for outstanding soil removal.**
- MilTouch-EX™ touch screen control, utilizing resistive touch screen technology and full VGA resolution, has a clear and informative display which shows current machine status info including total formula time and time elapsed. Formulas can be developed on a PC, saved to USB external memory and uploaded with a screen touch. Controller also provides intuitive fault diagnosis and relevant troubleshooting suggestions. **BENEFIT: Fewer operator errors.**
- 292-G high extract provides excellent moisture removal. Lower extract speeds are available for uniforms, delicate textiles and blended fabrics. **BENEFIT: Better extraction saves dryer fuel.**
- 20 liquid chemical ports, 15 signals, and optional 5 compartment supply injector. **BENEFIT: Promotes consistency and allows flexibility.**
- Larger cylinder perforated-area generates better wash quality, better rinsing and better extraction. **BENEFIT: Better extraction saves dryer fuel.**
- Faster process times reduce fabric wear, promoting longer linen life! **BENEFIT: Saves linen replacement costs.**
- Superior product support through local, highly-skilled dealers. **BENEFIT: Faster repairs mean less downtime.**



Superior cylinder design



Advanced control

Contact Milnor for your local, authorized dealer:

Pellerin Milnor Corporation
P.O. Box 400 • Kenner, LA 70063
t: 504-467-9591 • f: 504-468-3094

