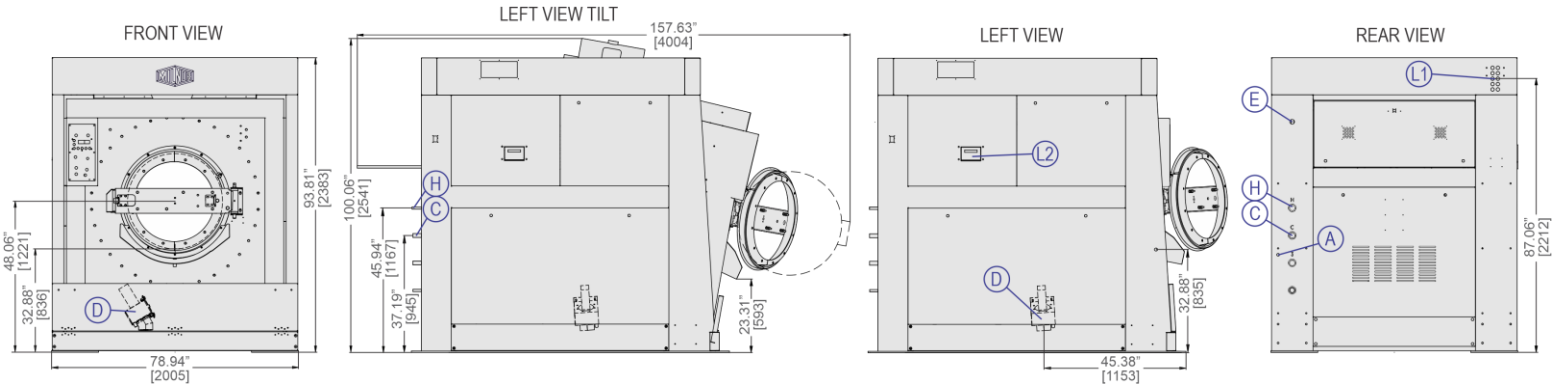


# MWF125Y7

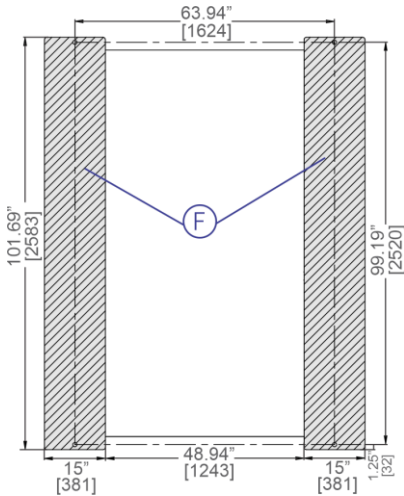
275 LB. (125KG) CAPACITY

SUSPENDED WASHER-EXTRACTOR

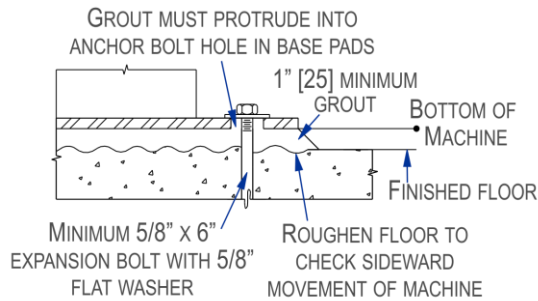
## SPECIFICATION SHEET



### FOUNDATION



### ANCHORING DETAIL



### LEGEND

A	Air inlet .25" (6.3mm) NPT
C	Cold water inlet 1.5" (38 mm) NPT
D	Drain to bottom 4.5" (114 mm) PSJ
E	Electrical connection
F	Foundation pads
H	Hot water inlet 1.5" (38 mm) NPT
L1	Soap chute
L2	Liquid soap inlets

### MECHANICAL SPECIFICATIONS

Capacity – lb. (kg)	275 (125)
Cylinder Diameter x Depth – in. (mm)	48x40 (1219x610)
Cylinder Volume – cu. ft. (L)	30.56 (776)
Door Opening – in. (mm)	42 (1186)
Machine Dimensions (W x D x H) – in. (mm)	78.94x101.69x93.82 (2005x2583x2383)
Shipping Dimensions (W x D x H) – in. (mm)	80.87x102.87x100 (2054x2613x2540)
Motor – HP (kW)	25 (18.5)
Wash Speeds – RPM	31
Distribution Speed – RPM	65
Extraction Speeds – RPM	664
Extraction G-Force	300
Static Weight – lb. (kg) ✧	10,588 (4807)
Max. Dynamic Load RMS – lb. (kg) ✧	1650 (749)
Frequency – Hz	11.07
Water Pressure <sup>(Required)</sup> psi (bar)	10-75 (.68-5.1)
Water Valve Cv Rating	11.65 (44.1)
Minimum Recommended Distance Between Machines – in. (mm)	16 (406)

### ELECTRICAL SPECIFICATIONS

Voltage	Running Amps	Fuse (Amps)	Circuit Breaker (Amps)
208/3/60	62	FRN75	75
220/3/50-60	60	FRN75	75
240/3/60	59	FRN75	75
380/3/50-60	33	FRS50	50
415/3/50	33	FRS50	50
480/3/60	32	FRS50	50

See Fuse and Wire Size manual MAEFUSE1BE for safety information. Contact factory regarding single phase availability.

▼ See dimensional drawing for complete details.

✧ It is the sole responsibility of the owner/user to assure that the floor and/or any other supporting structure exceeds not only all applicable building codes, but also that the floor and/or any other supporting structure for each washer-extractor or group of washer-extractors has sufficient strength and rigidity (i.e., a natural or resonant frequency many times greater than the rotational machine speed with a reasonable factory of safety) to support the weight of all the fully loaded machine(s) including the weight of the water and goods, and including the published 360° rotating sinusoidal RMS forces that are transmitted by the machine(s). Contact the factory for additional machine data for use by a structural engineer.



# MWF125Y7

275LB. (125KG) CAPACITY

SUSPENDED WASHER-EXTRACTOR

## SPECIFICATION SHEET

### Standard Features:

- RinSave® water saving technology
- 13.5° tilting forward
- MilTouch™ touch screen controller
- Single-motor inverter drive
- Tall, lifting ribs
- Tapered roller bearings
- High M.A.F. (Mechanical Action Factor)
- Large cylinder perforations
- Fresh-water flushing chemical manifold
- Ten (10) liquid chemical injection ports
- Control reads in English/second language
- 5-year limited warranty on frame, cylinder & shell

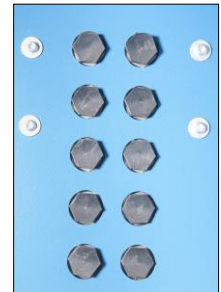


### Optional Features:

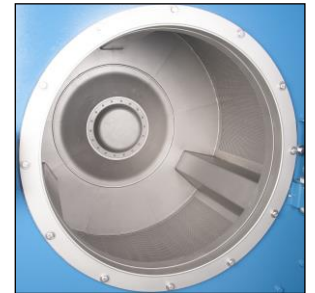
- Steam
- Electric heat
- 5 compartment flushing supply injector

### Why Purchase Milnor?

- RinSave® water saver in conjunction with large cylinder perforations provides more efficient rinsing. **BENEFIT: Saves water, energy, and time.**
- Larger cylinder volume than most competitive similar sized washer-extractors provides *greater productivity*. More linen washed per day, or fewer hours required to process. **BENEFIT: Saves labor.**
- Greater cylinder perforated-area generates *better wash quality, better rinsing and better extraction*. **BENEFIT: Better extraction saves dryer fuel.**
- Faster process times reduce fabric wear, promoting *longer linen life!* **BENEFIT: Saves linen replacement costs.**
- Tall ribs provide excellent lift and high drop. **BENEFIT: Greater mechanical action (M.A.F.) leads to better wash quality.**
- 300-G high extract provides excellent moisture removal. Lower extract speeds are available for uniforms, delicate textiles and blended fabrics. **BENEFIT: Better extraction saves dryer fuel.**
- MilTouch™ touch screen control, utilizing resistive touch screen technology and full VGA resolution, has a clear and informative display which shows current machine status info including total formula time and time elapsed. Formulas can be developed on a PC, saved to USB external memory and uploaded with a screen touch. Controller also provides intuitive fault diagnosis and relevant troubleshooting suggestions. **BENEFIT: Fewer operator errors.**
- Superior product support through local, highly-skilled dealers. **BENEFIT: Faster repairs mean less downtime.**



Safe chemical injection



Superior cylinder design



SmoothCoil™ 4 Point Suspension System

Contact Milnor for your local, authorized dealer:

Pellerin Milnor Corporation  
P. O. Box 400 • Kenner, LA 70063  
t: 504-467-9591

