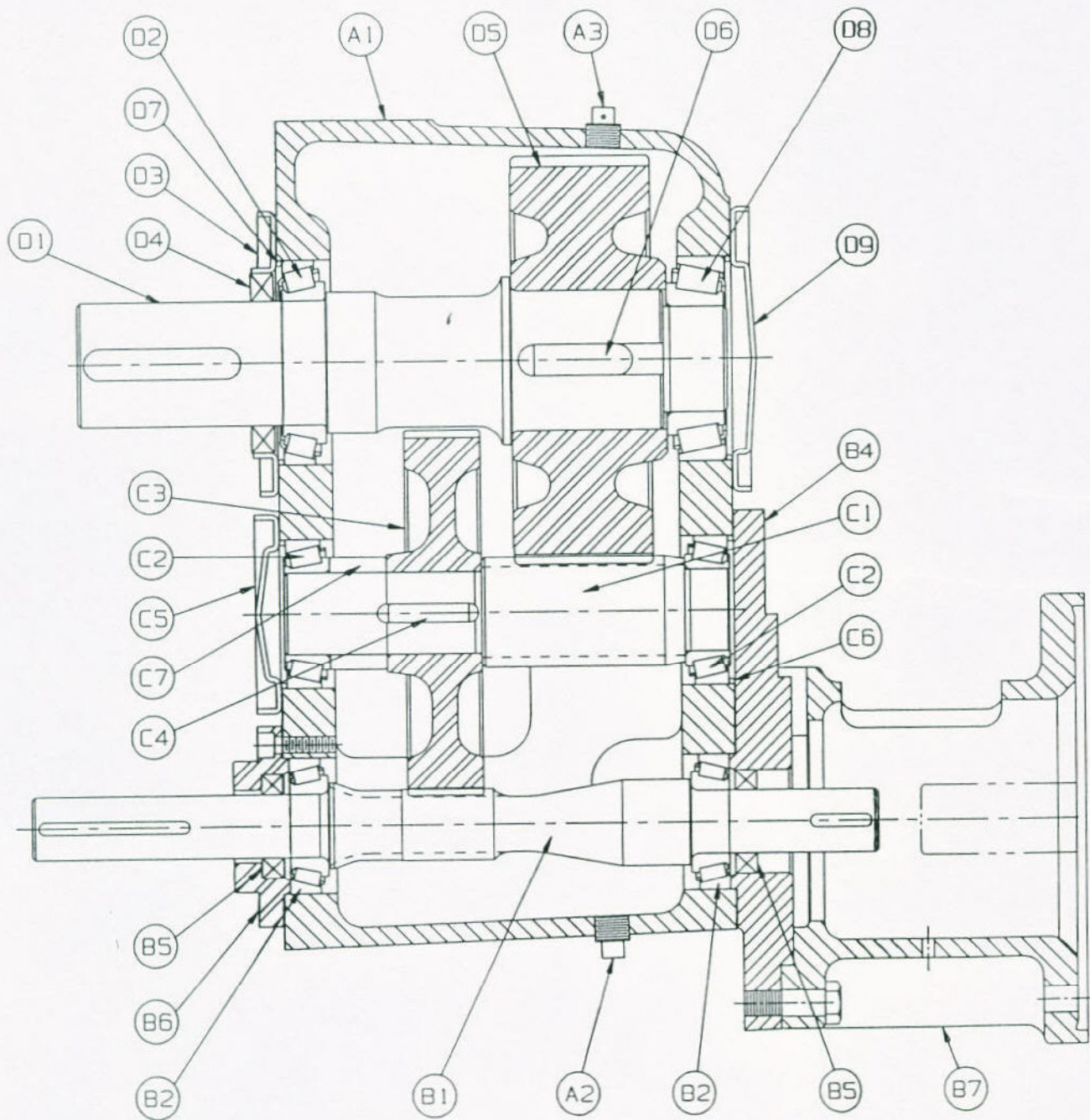


MILNOR MODEL #54S029  
DORRIS MODEL #3325CF-CBW21





**MILNOR MODEL #54S029****DORRIS MODEL #3325CF-CBW21**

PLEASE INDICATE MODEL # AND SERIAL # WHEN ORDERING PARTS

<u>PART NAME</u>	<u>REF. NUMBER</u>	<u>QTY</u>	<u>PART #</u>
HOUSING	A1	1	3301
L VENT BREATHER	A3	1	3/8 L VENT
COVER PLATE	*	2	22003-BF
COVER PLATE GASKET	*	2	22060
MAGNETIC DRAIN PLUG	A2	1	3/8 MAG
HEX SOCKET PIPE PLUG	*	5	3/8 HSP
HIGH SPEED PINION	B1	1	3310-18-2N
HS OPEN CAP	B6	1	3307
C-FACE ADAPTOR	B7	1	AD-21
HIGH SPEED BEARING	B2	2	14276/14125A
HIGH SPEED OIL SEAL	B5	2	410244
MOTOR PLATE	B4	1	33CF
INTERMEDIATE GEAR	C3	1	3311-107-N
INTERMEDIATE GEAR KEY	C4	1	E1-007H
INTERMEDIATE GEAR SPACER	C7	1	3363
INTERMEDIATE PINION	C1	1	3309-22-G
INTERMEDIATE CLOSED CAP	C5	1	18720-X
INTERMEDIATE SPACER RING	C6	2	31506-2-R
INTERMEDIATE BEARING	C2	2	24720/24780
LOW SPEED GEAR	D5	1	3312-91-2G
LOW SPEED GEAR KEY	D6	1	B1-042H
LOW SPEED SHAFT	D1	1	3308-8
LOW SPEED OPEN CAP	D3	1	29520-O
LOW SPEED CLOSED CAP	D9	1	29520-X
LOW SPEED SPACER RING	D7	2	28920-R
LOW SPEED EXT. SIDE BEARING	D2	1	39412/39520
LOW SPEED BACK SIDE BEARING	D8	1	456/453X
LOW SPEED OIL SEAL	D4	1	415369
SHIM SET	*	1	3300SS

\*Not Shown On Drawing