

ATTENTION INSTALLERS!

Critical Hydraulic Component Attachment Instructions See Installation manual for complete attachment procedure.

BIPPM10 (Published) Book specs- Dates: 20111019 / 20111019 / 20111020 Lang: ENG01 Applic: PPM

Attach hydraulic components (press in position).

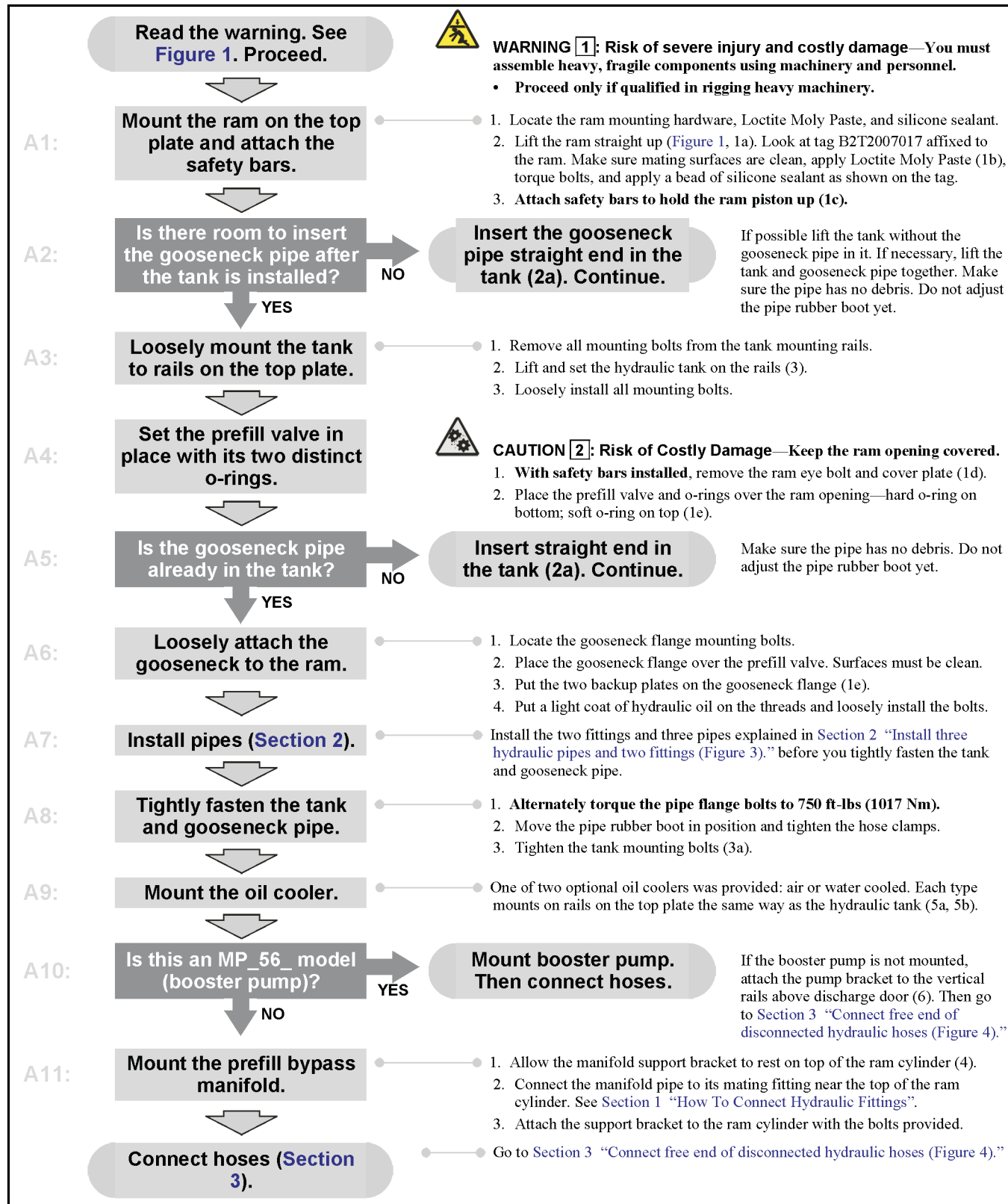
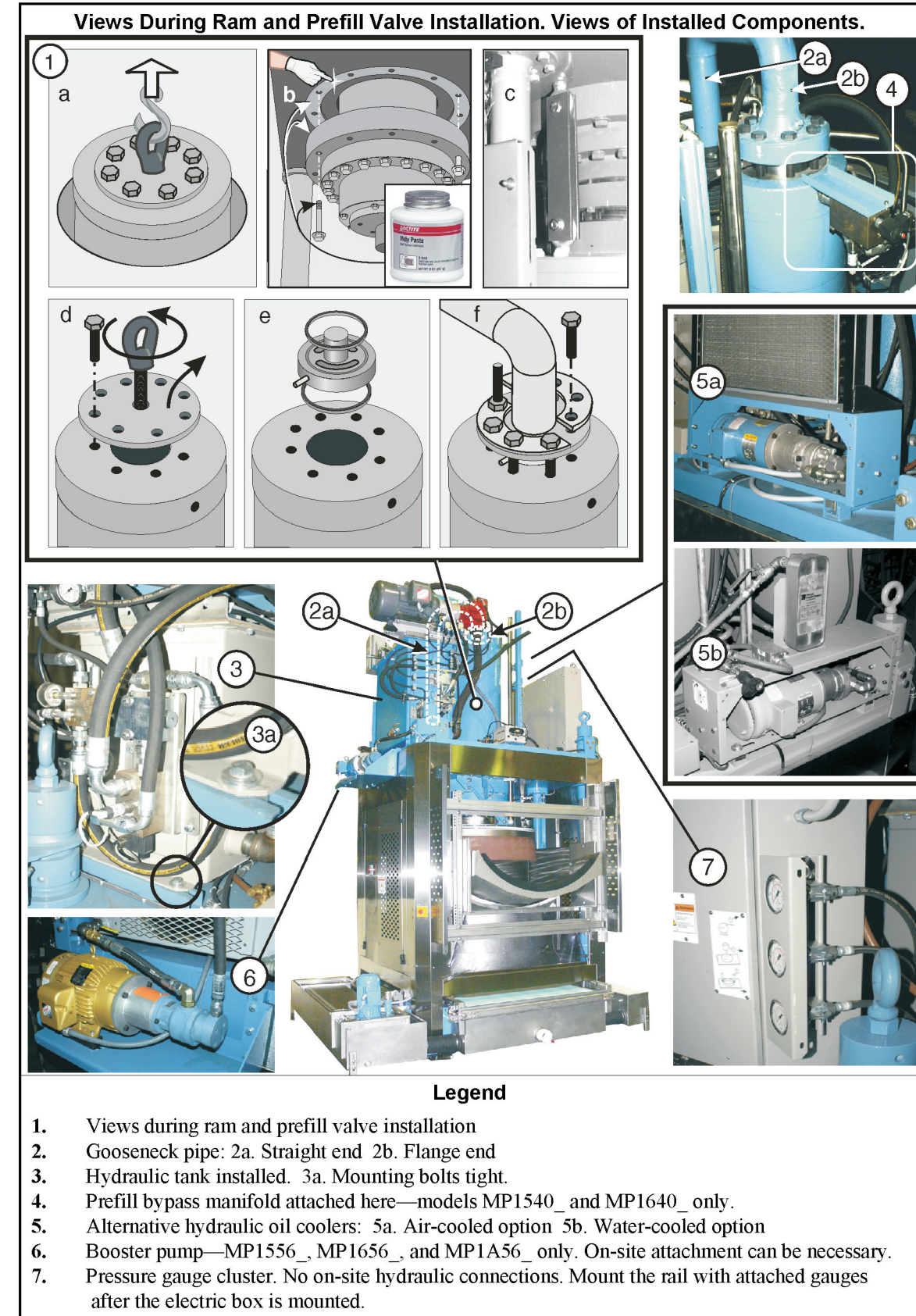


Figure 1: Attachment of Hydraulic Components



Over

Hydraulic Component Attachment Instructions, continued

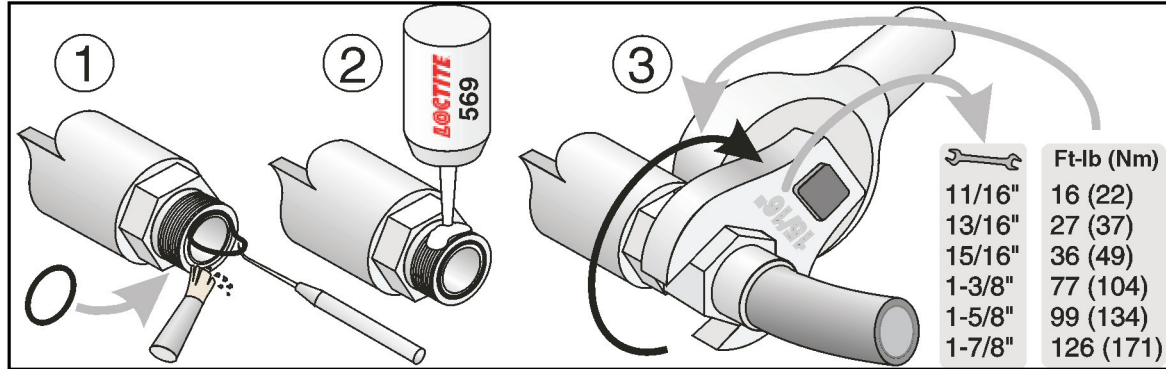
1. How To Connect Hydraulic Fittings



CAUTION 3: High pressure system—Fittings will leak if not connected as in Figure 2.

- Use new o-ring and thread sealer on every fitting (new o-rings, thread sealer supplied).
- Use a torque wrench. Use the correct size crows foot (supplied). Do not over-torque.

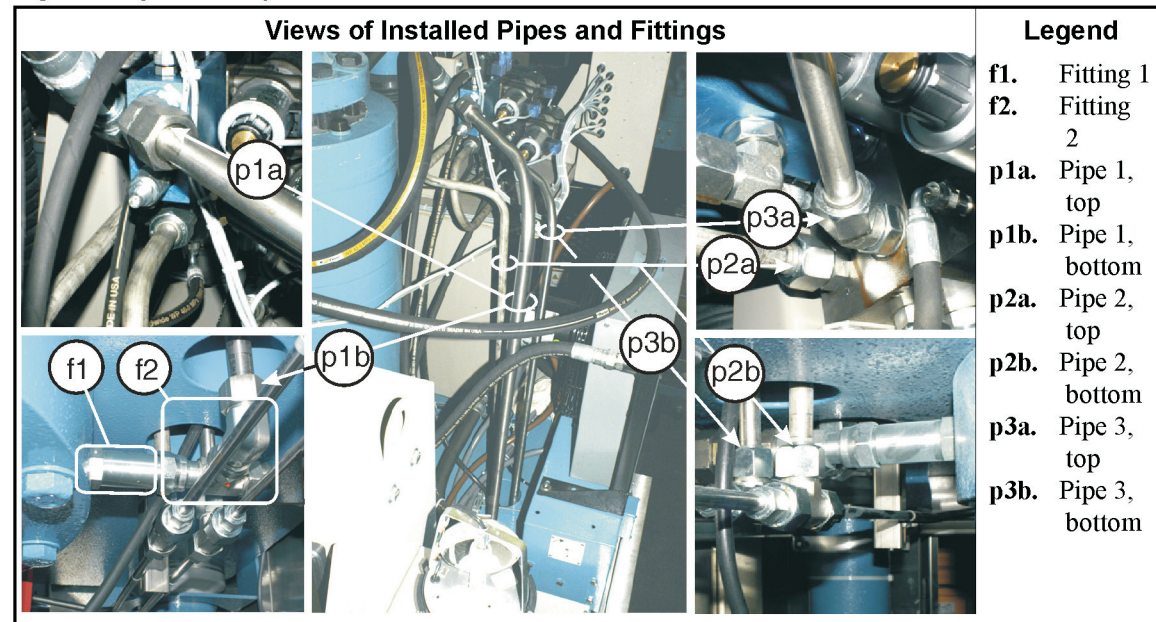
Figure 2: 1) Replace O-ring in a clean groove. 2) Apply thread sealer. 3) Torque to specification.



2. Install three hydraulic pipes and two fittings (Figure 3).

Solidly connect f1 and f2 as explained in Section 1 "How To Connect Hydraulic Fittings". Each pipe has a unique shape and will only correctly match one pair of connections. Loosely connect the three pipes. Adjust the position of the hydraulic tank to minimize stress on the pipes. When you get the best fit, disconnect each pipe end then reconnect per Section 1.

Figure 3: Hydraulic Pipe Connections



3. Connect free end of disconnected hydraulic hoses (Figure 4).

Connect the fitting on the free end to its mating fitting. Tags with the same number are attached to mating fittings. Use the tags and this instruction to match the fittings. Connect fittings as explained in Section 1 "How To Connect Hydraulic Fittings".

Figure 4: Hydraulic Hose Connections. Item arrows point to the fitting on free end of hose.

