

Minimum Breakdown Dimensions
4840F7J/F7N

BD48FMINAE/2006455A
(Sheet 1 of 7)



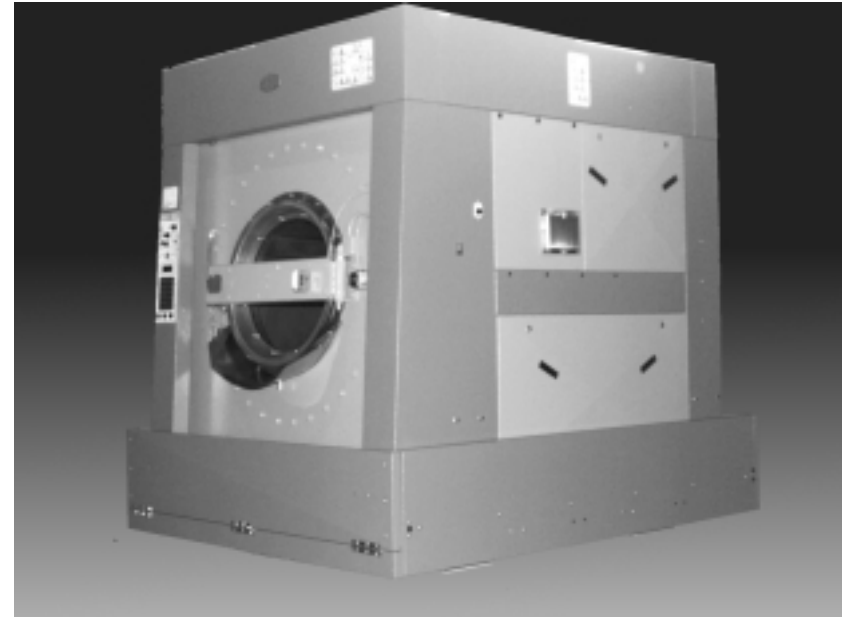
Pellerin Milnor Corporation
P. O. Box 400, Kenner, LA 70063-0400

Litho in U.S.A.

**RECOMMENDATIONS REGARDING MINIMUM
DOOR CLEARANCES.**

TO MAKE 4840F7J/F7N MACHINES SMALLER:

- A. The frame would have to be disassembled.
(See following pages for the size of major
machine components.)**
- B. The shellfront, shell and bearing house can be left
together. Motor (Drive Base Assembly)
may be removed. See illustration page 2.**



The factory recommends disassembling the top frame members, perhaps leaving the rear columns with electric box and supply connected. The shell may still be mounted to the bottom frame and also shipping brackets, which may help support the shell until ready to lift it off.

- C. The shellfront may be removed. See illustration page 3. (Note, when the shellfront is removed, a Reinstall Kit (KPWSFGK001) is required to reassemble.**

Continued
→

Minimum Breakdown Dimensions

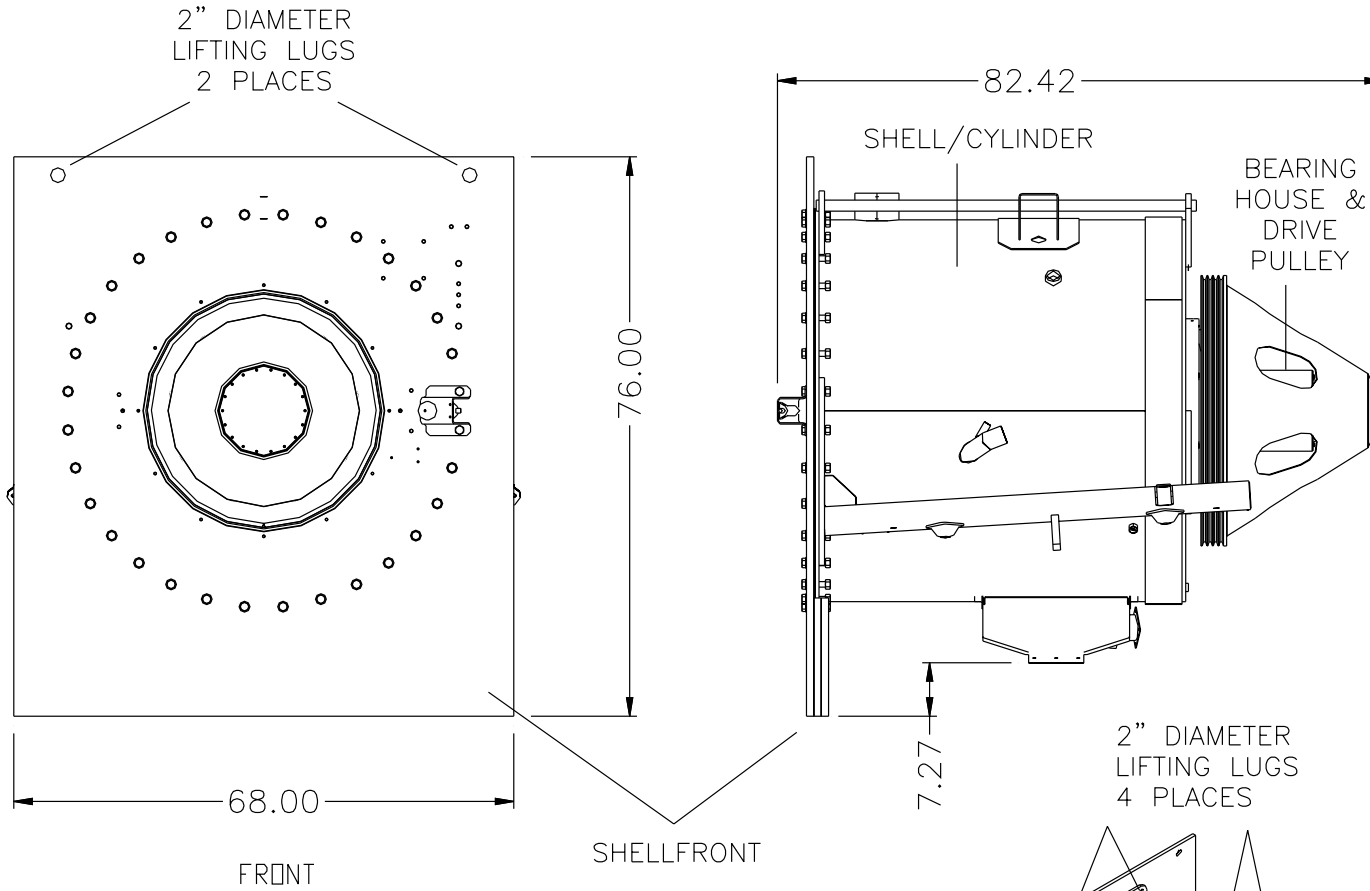
4840F7J/F7N

BD48FMINAE/2006455A
(Sheet 2 of 7)



Pellerin Milnor Corporation
P. O. Box 400, Kenner, LA 70063-0400

Litho in U.S.A.



SHELL-BEARING HOUSE-CYLINDER-SHELLFRONT
EST. WEIGHT = 6,050 Lbs

Continued
→

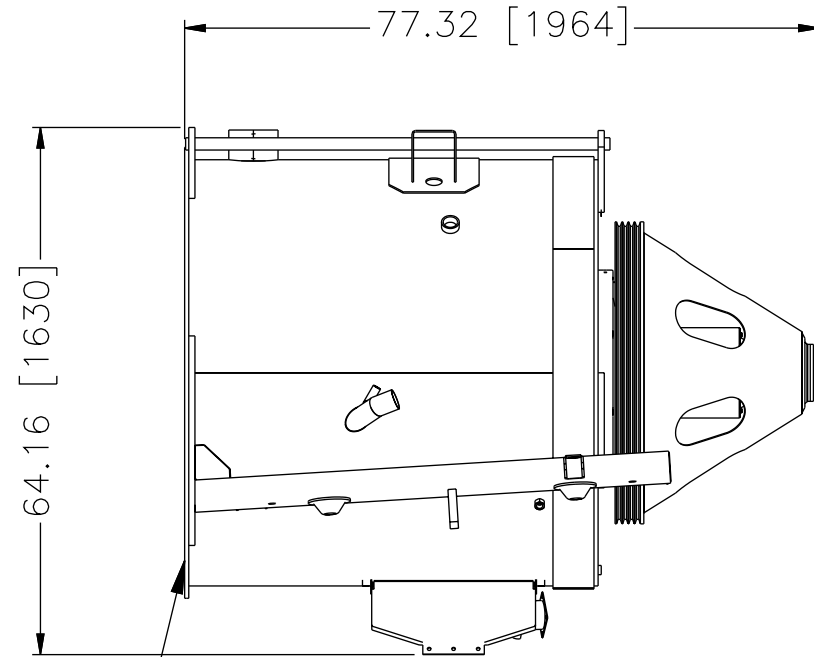
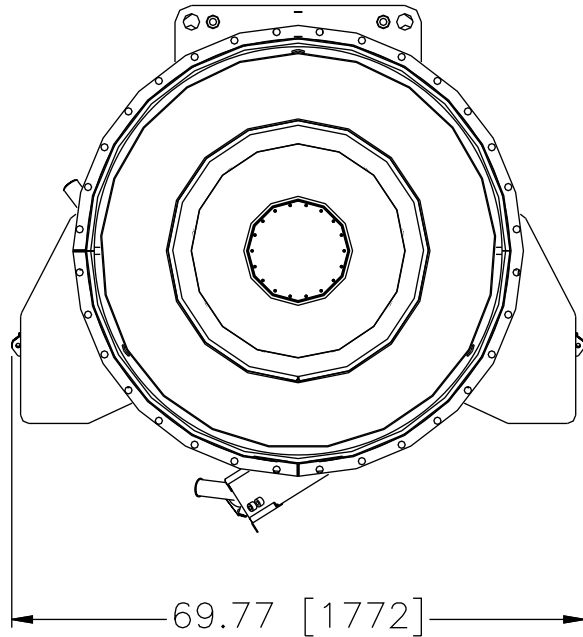
Minimum Breakdown Dimensions
4840F7J/F7N

BD48FMINAE/2006455A
(Sheet 3 of 7)



Pellerin Milnor Corporation
P. O. Box 400, Kenner, LA 70063-0400

Litho in U.S.A.



IF SHELL FRONT/DOOR ARE REMOVED
A REINSTALL KIT (PART NUMBER KPWSFGK001)
SHALL BE NEEDED TO REASSEMBLE.

SHELL, BEARING HOUSE, CYLINDER
EST. WEIGHT = 4,300 Lbs

Continued
→

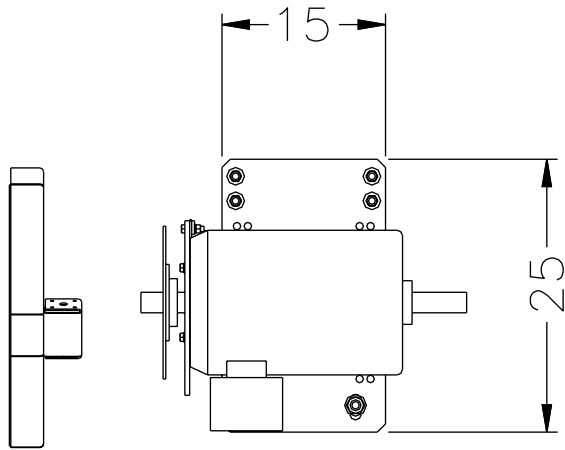
Minimum Breakdown Dimensions
4840F7J/F7N

BD48FMINAE/2006455A
(Sheet 4 of 7)

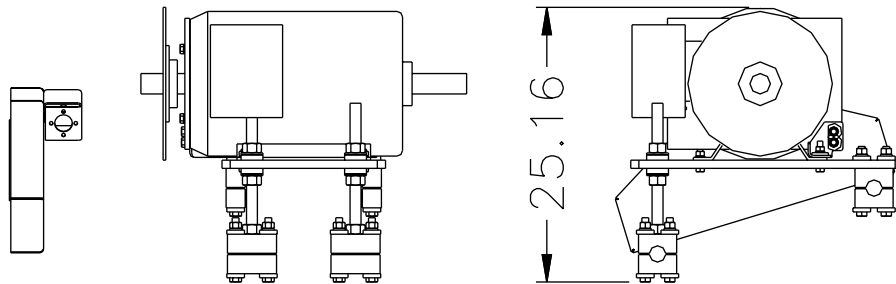
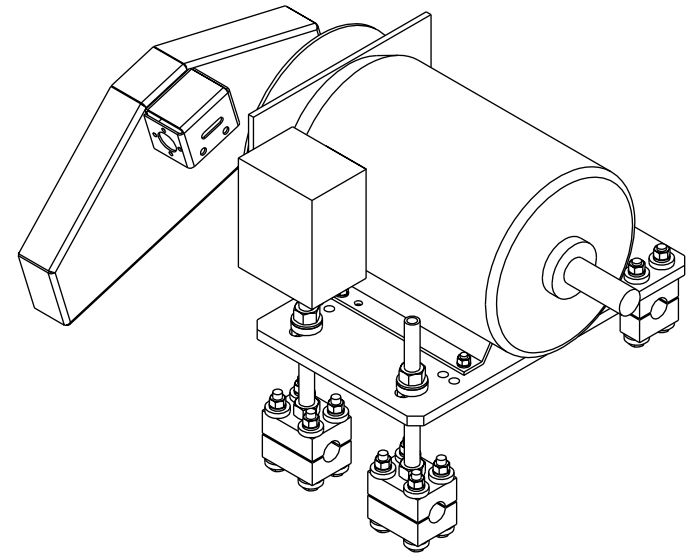


Pellerin Milnor Corporation
P. O. Box 400, Kenner, LA 70063-0400

Litho in U.S.A.



DRIVE BASE ASSEMBLY
EST. WEIGHT = 600 Lbs



Minimum Breakdown Dimensions

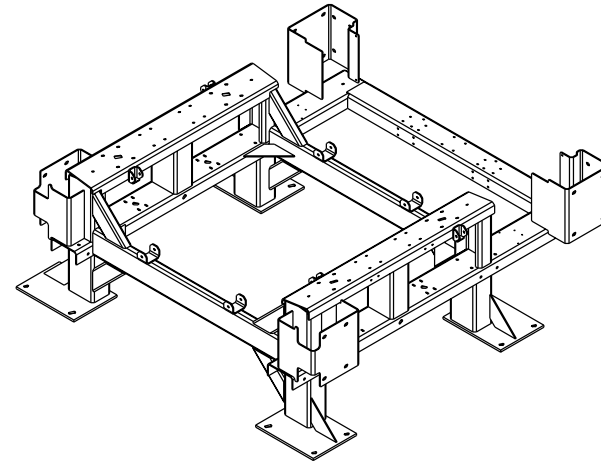
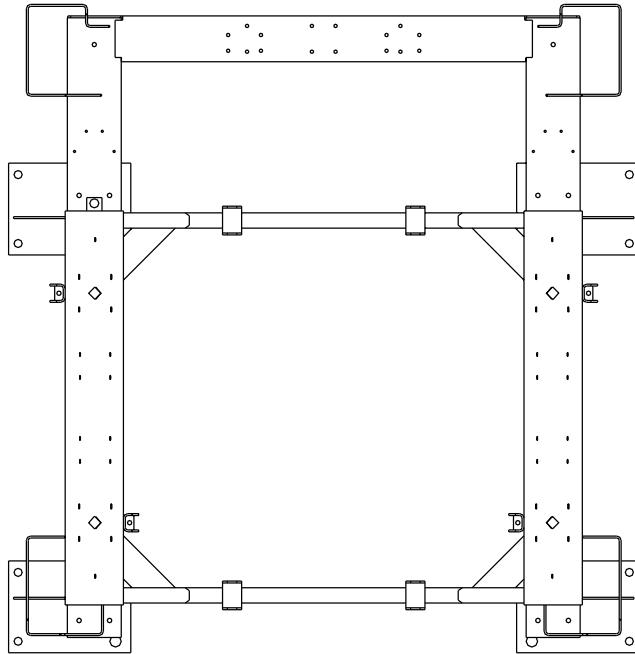
4840F7J/F7N

BD48FMINAE/2006455A
(Sheet 5 of 7)

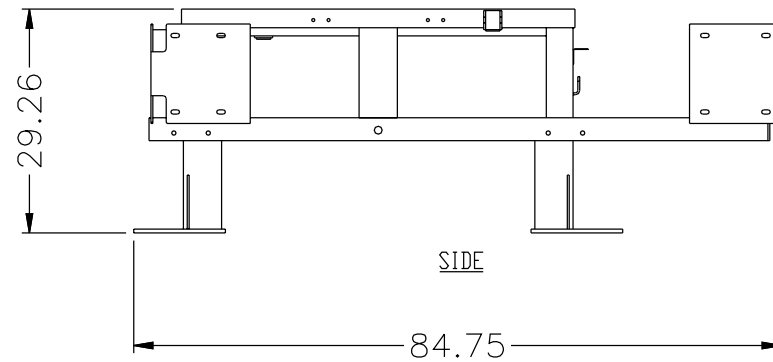
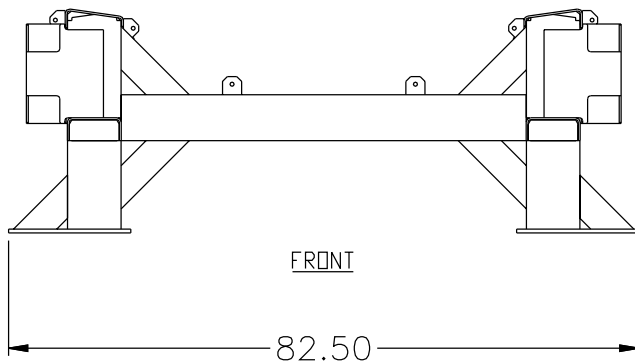


Pellerin Milnor Corporation
P. O. Box 400, Kenner, LA 70063-0400

Litho in U.S.A.



NON-TILT FRAME
EST. WEIGHT = 875 Lbs



Minimum Breakdown Dimensions

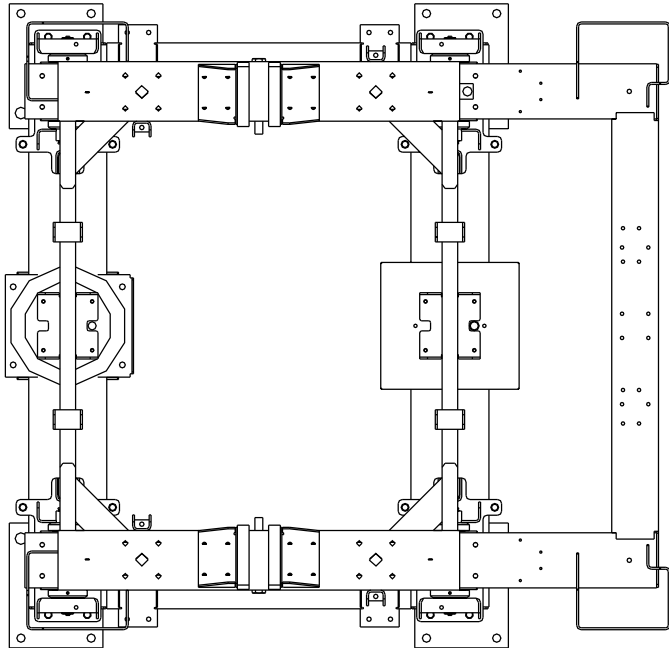
4840F7J/F7N

BD48FMINAE/2006455A
(Sheet 6 of 7)

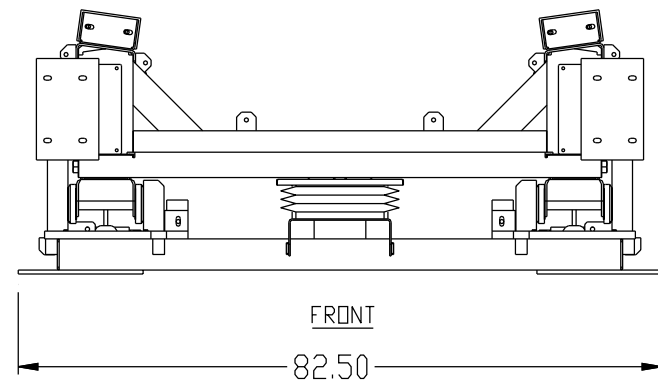
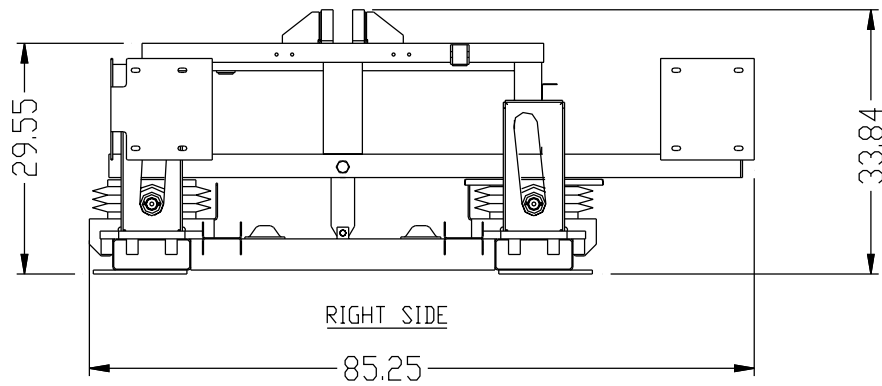
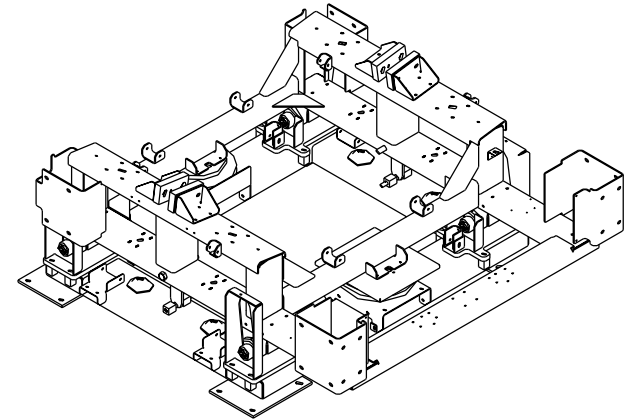


Pellerin Milnor Corporation
P. O. Box 400, Kenner, LA 70063-0400

Litho in U.S.A.



TILT FRAME
EST. WEIGHT = 1765 Lbs



Minimum Breakdown Dimensions
4840F7J/F7N

BD48FMINAE/2006455A
(Sheet 7 of 7)



Pellerin Milnor Corporation
P. O. Box 400, Kenner, LA 70063-0400

Litho in U.S.A.

