

Instruction for Installing MTS (09T044C37) Timer

BMP830007/2005344V
(Sheet 1 of 1)



Pellerin Milnor Corporation
P. O. Box 400, Kenner, LA 70063-0400

Litho in U.S.A.

The MTS (09T044C37) timer is directly interchangeable with the previous timer with only slight modifications. Proceed as follows:

- 1) Be sure all electrical power is shut off the machine at the wall disconnect.
- 2) Remove top and rear covers.
- 3) Remove 2 screws holding the old timer in place and move to the left as far as wires will permit.
- 4) Per Figures 1 & 2: Mark around and remove insulation.
- 5) Per Figure 3: With pistol grip hacksaw, cut 2 ends to fold chassis down. Figure 4 shows modified chassis with piece folded over.
- 6) Install new timer as usual replacing wire for wire. A jumper wire has to be installed between terminals #24 and #25 on the timer. Terminal #24 needs to be tied to the coil of the E1 relay only! Wire #25 from the E1 relay (normally open contact) needs to be connected to terminal #23 of the timer. Wire #23 is also connected to terminal #23.

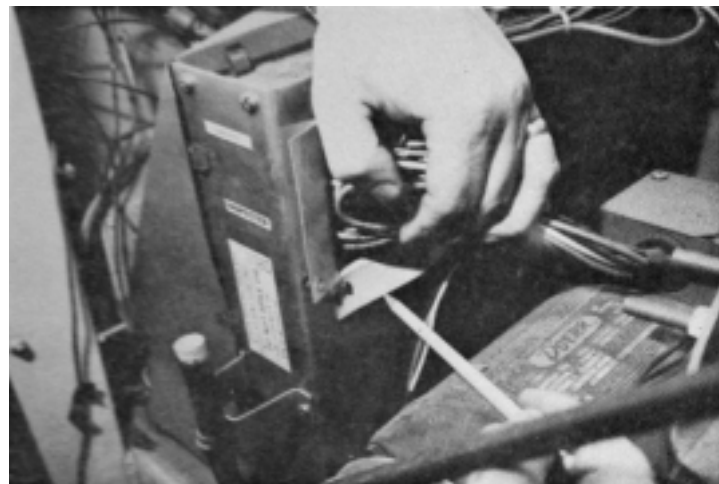
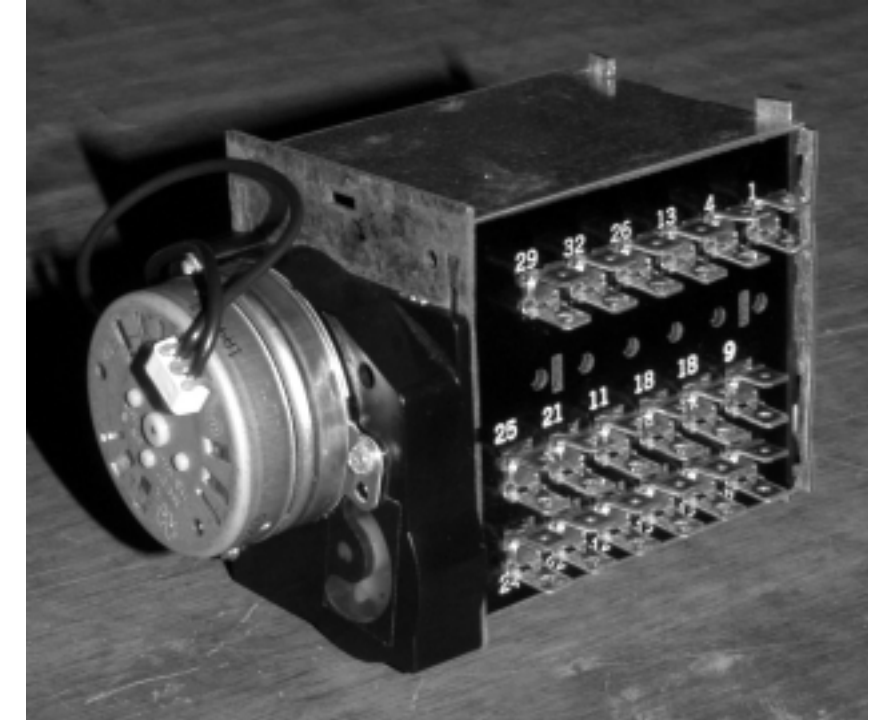
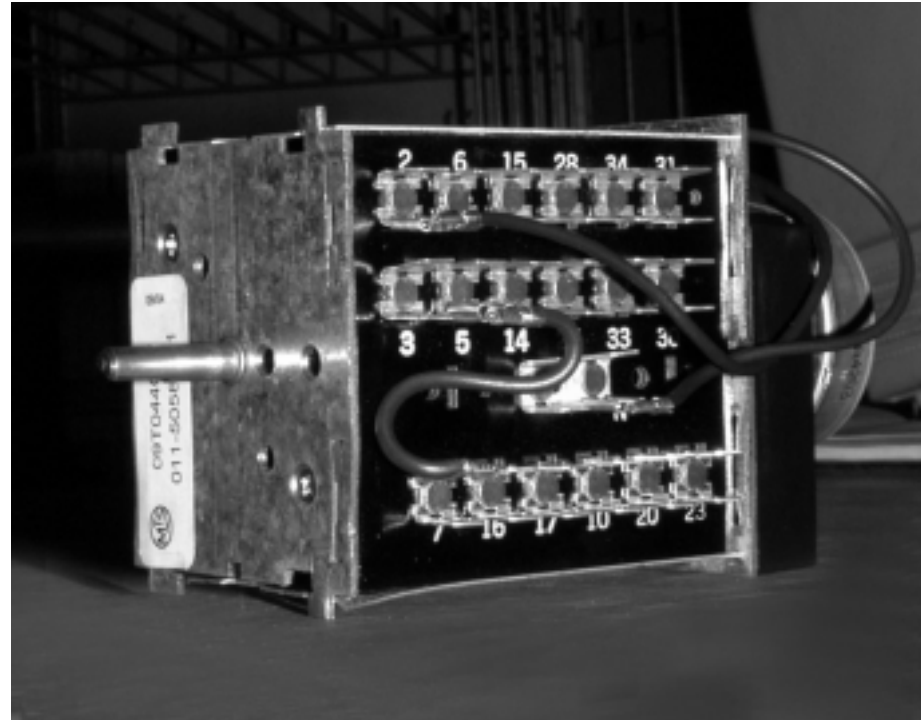


Figure 1



Figure 2

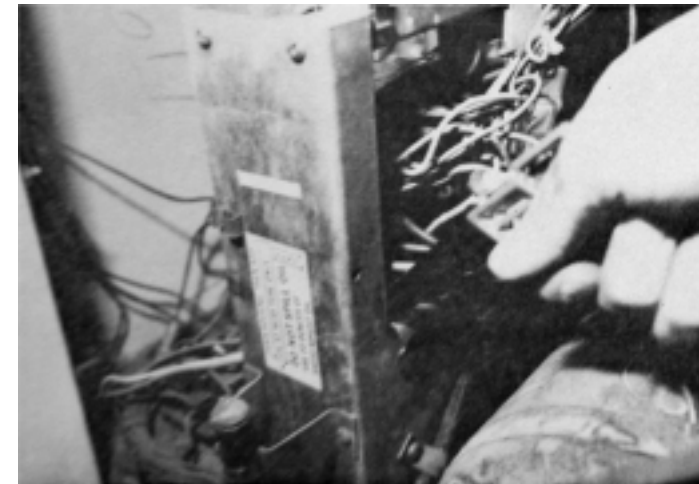


Figure 3

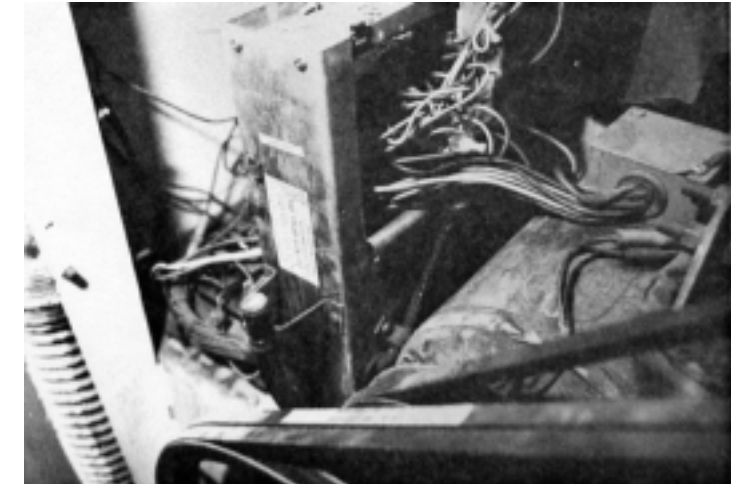


Figure 4