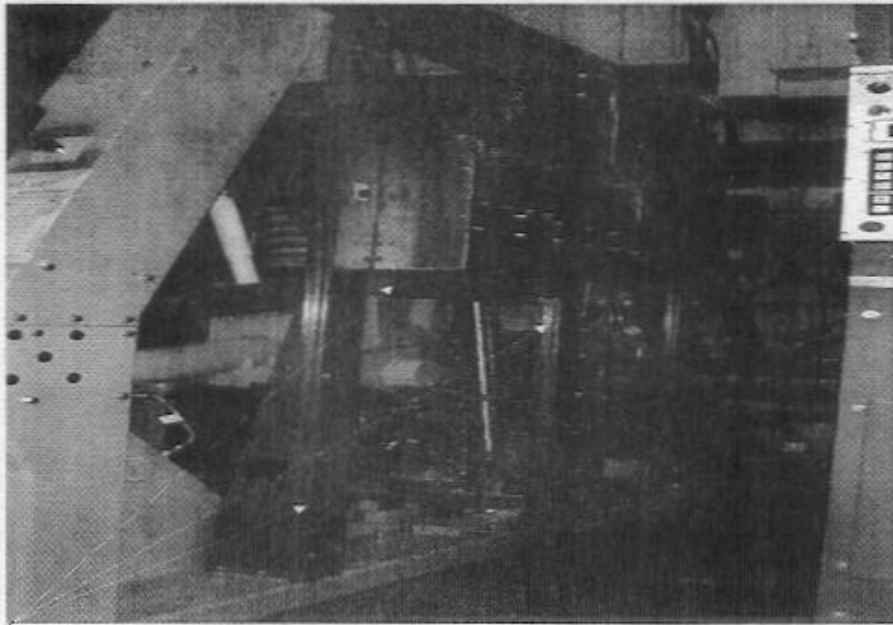


RETROFIT FOR ISOLATOR ASSEMBLY ON 72058 MODEL

Upon receiving your retrofit kit, you will notice the hardware is shipped in several bags. Each bag is for a particular component group. Do not open all bags and mix contents.

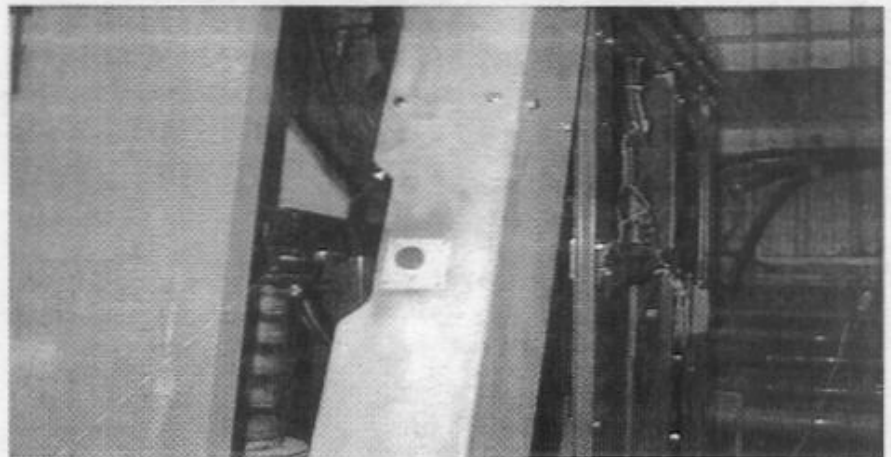
In order to begin your retrofit you must turn off the water supply to the machine. The chemical dispenser (soap chute or 5 compartment supply) is then removed and the two vertical and one horizontal structural cosmetic members are also removed.



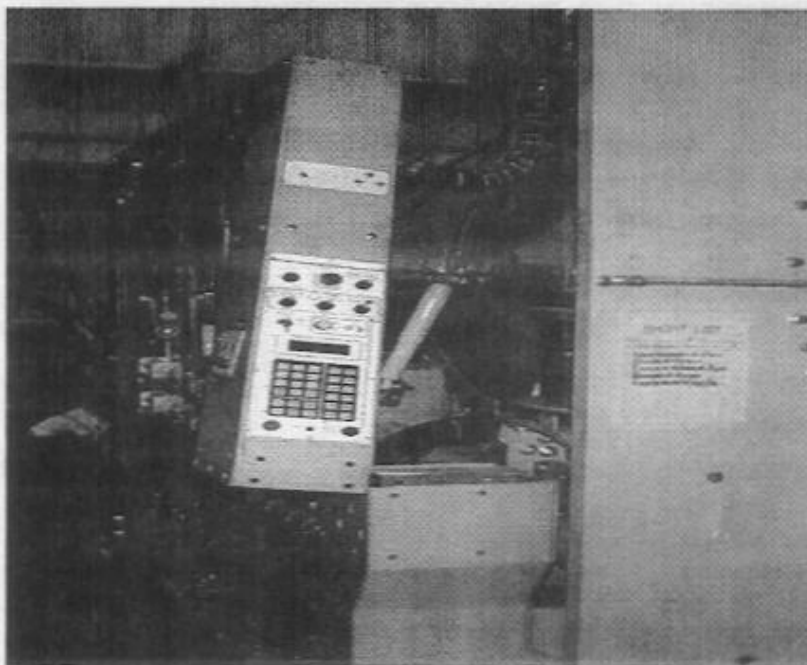
Remove chemical dispenser and framing support for unit.

If your right front column does not have a notch, you must make one in order to avoid interference with the new isolator assemblies.

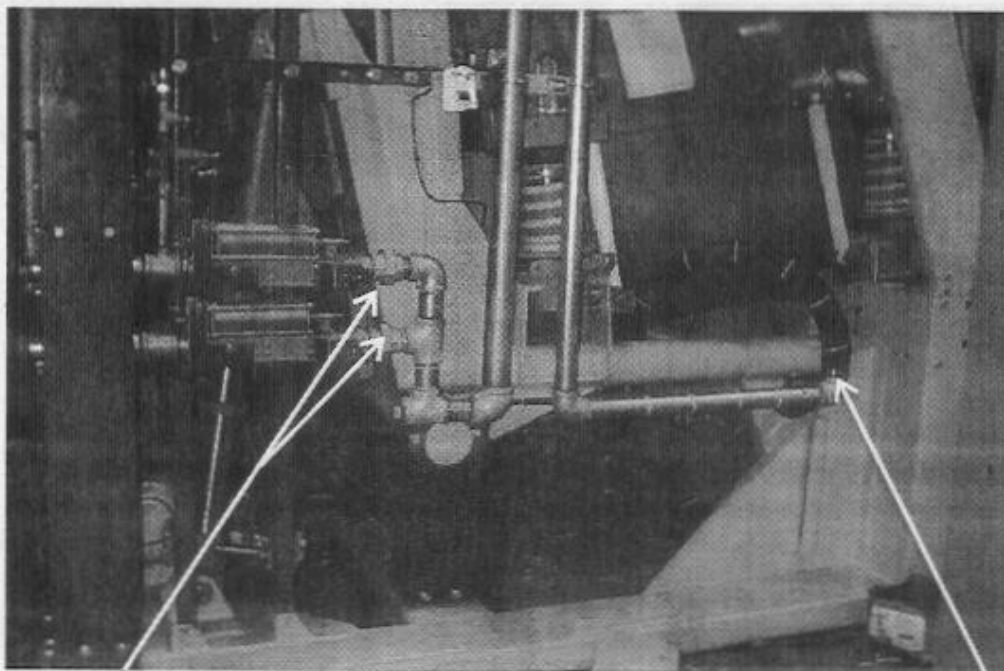
A kit is provided to you with a templet to a cut a notch in the column. Once modified, a structural member is attached with hardware to the column which provides protection from any cut edges.



Right column must be notched

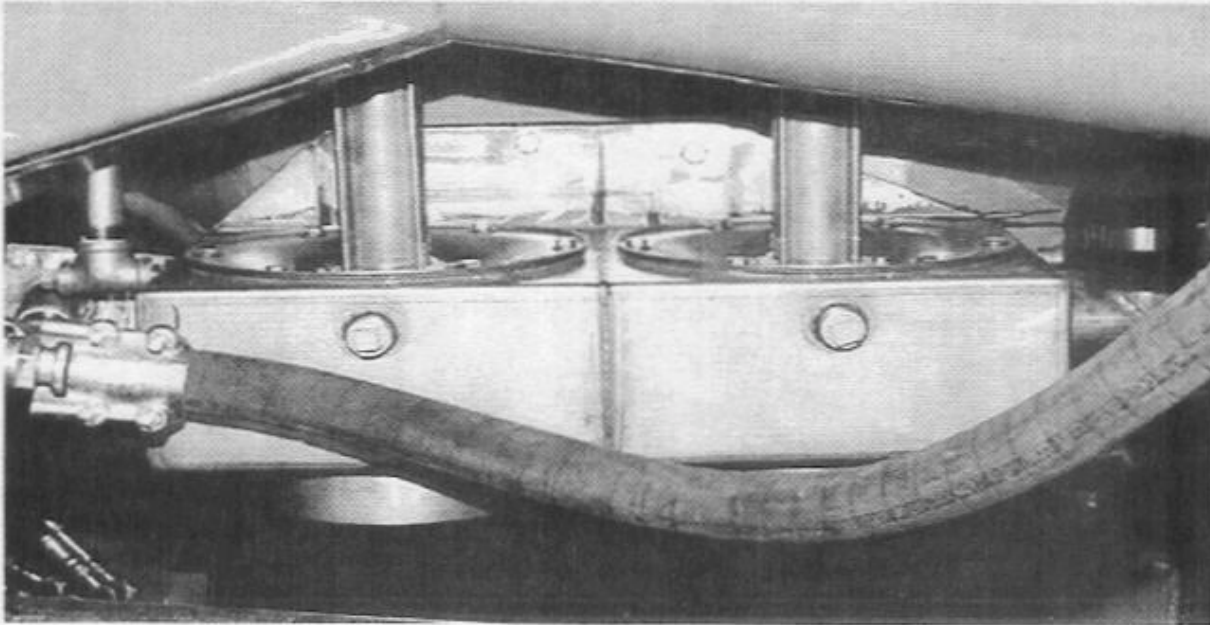


The two front columns will have to be unbolted and swung outward. Leave top side corner bolt in place. The above instruction allows for easy access to isolator. The procedure is done to both sides and the result is as shown above.



Disconnect piping here and remove in order to have access to rear isolator assembly

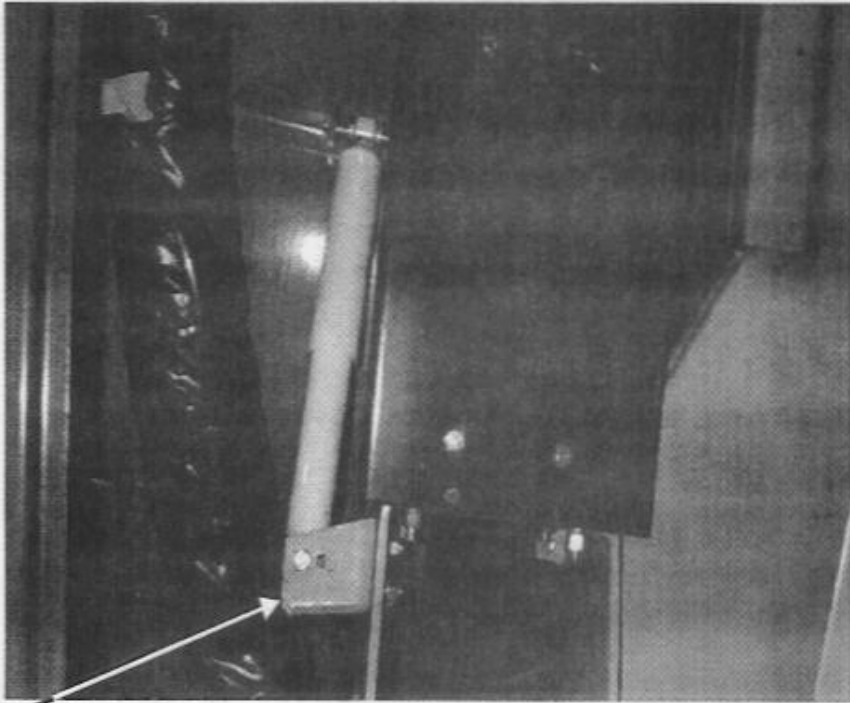
The water lines must be removed for access to the rear isolator.



If your machine has dual dump valves, the dump valve must be disconnected (disconnect by removing the eight bolts through the square flange). This is a precaution taken to avoid damage to machine when tilting machine on fixtures provided with retro kit.



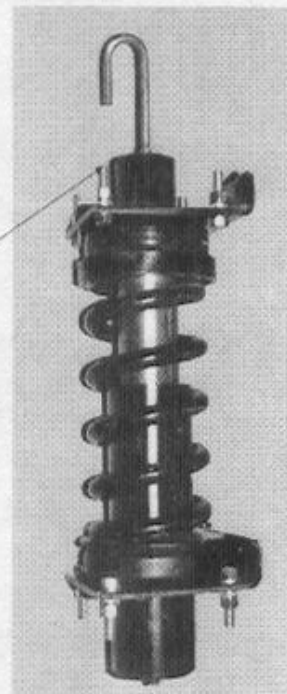
Access to two bolts of the flange is through the bottom of the dump valve assembly.



Disconnect shock and remove lower bracket (see step 1)

Once the chemical dispenser, columns, and plumbing have been moved for access to isolator, we can proceed by disconnecting the front shock at the bottom mounting bracket. Remove front shock on both sides. Do not disconnect rear shocks at this time. Remove the eight bolts securing the front isolator assembly in place. This is to be done to both right and left front isolators.

Remove mounting bolts

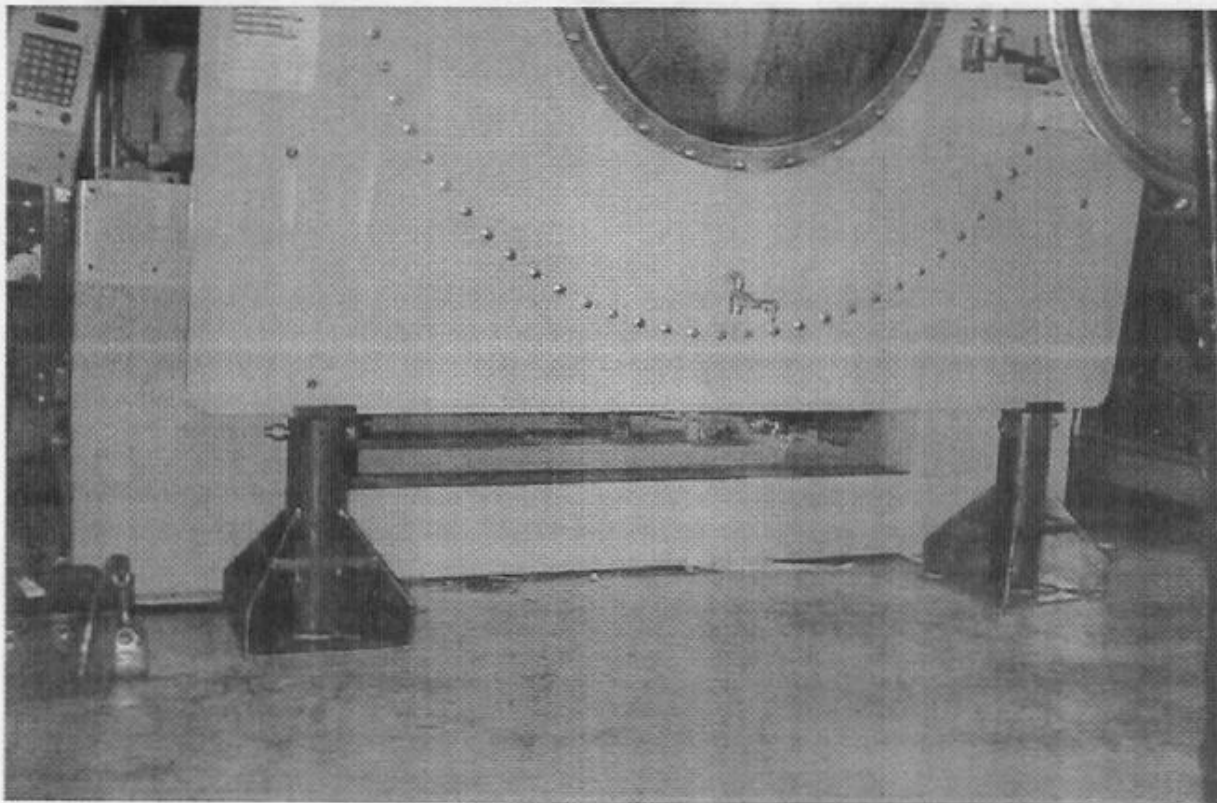




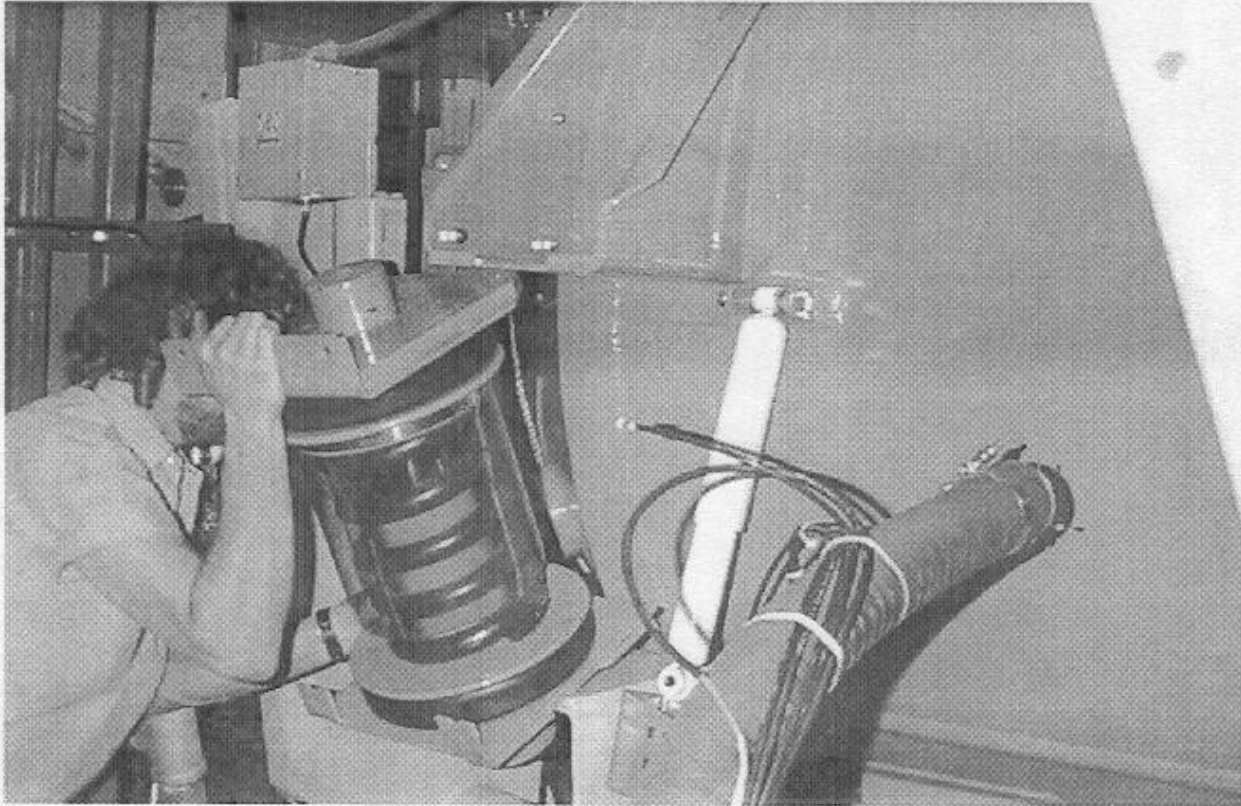
Bracket for excursion switch is modified by adding one hole two inches below bottom hole.

Before we tilt the machine it is best to remove the excursion switch and mounting bracket. Once the isolator assemblies are replaced the machine's position is raised. The excursion switch has to be moved in order to be centered once again. A hole has to be drilled in the mounting bracket two inches below the existing hole. (SEE ADDENDUM)

In order to remove the isolator assemblies, the force must be removed from the springs. We have provided jack stands to assist you with this task.

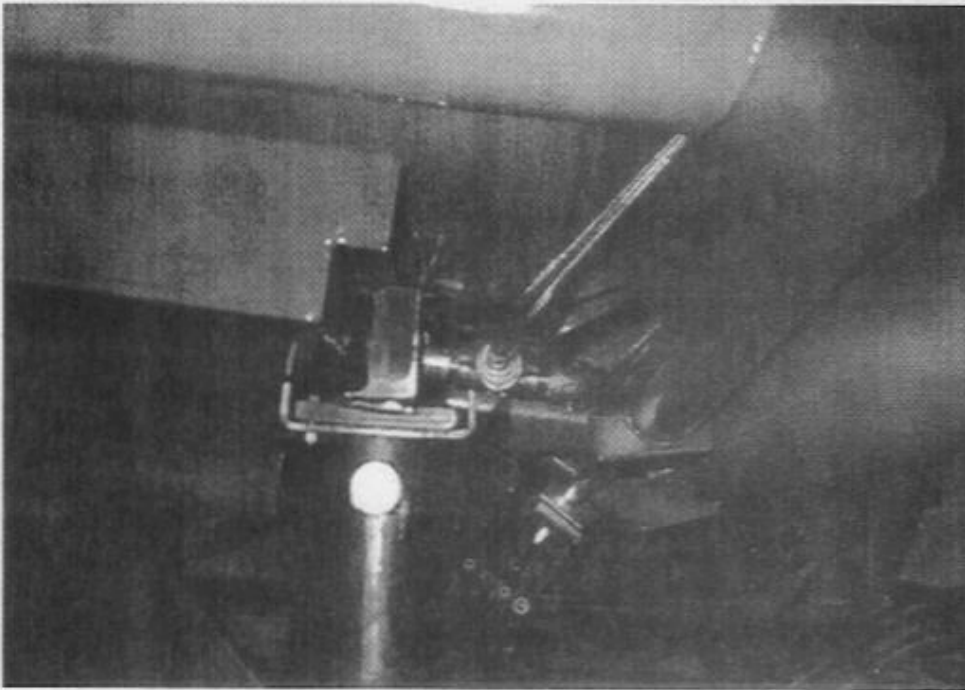


Using the tilt button/switch located on the left front column, tilt the machine forward until the isolator assembly is loose and you are able to slide it free from the slotted top mount plate. As one service worker holds the isolator in the position shown the other technician disassembles the assembly starting with top plate and removes each component until isolator is totally removed.



Locate the isolator assembly components and hardware shipped to you. The only items retained from the old assembly are the springs and vent tubes. The hardware will be in a bag labeled "IH". Install the new components and hardware. The top mounting plate for the front isolator require the longer bolts. The hardware is not fully tighten, but installed in order to keep assembly in place. Now tilt the machine off the stands and tighten fasteners. Install the new shock mount brackets. Attach front shocks using upper front hole of bracket.

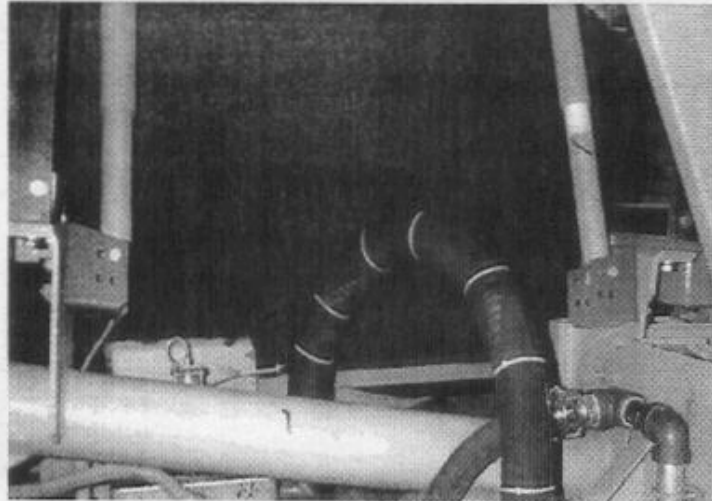
Disconnect the rear shock at the bottom mounting bracket. Remove the eight bolts securing the rear isolator assembly. Repeat procedure for opposite side. One jack stand with adapter mounting plate attached is to be positioned under the machine near the cone. The following illustration is the jack stand in position.



Using the machine's hydraulics tilt back on the machine until the isolator assembly is free. Tilt assembly outward as done previously with front isolators. Use the same procedure on rear assemblies as performed on the front isolators. After assemblies are in place, tilt the machine forward off the tilt stand and tighten bolts.

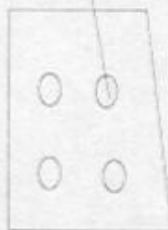
Install new shock mount brackets. Use front top hole for bolting shock.

← REAR FRONT →



← REAR FRONT →

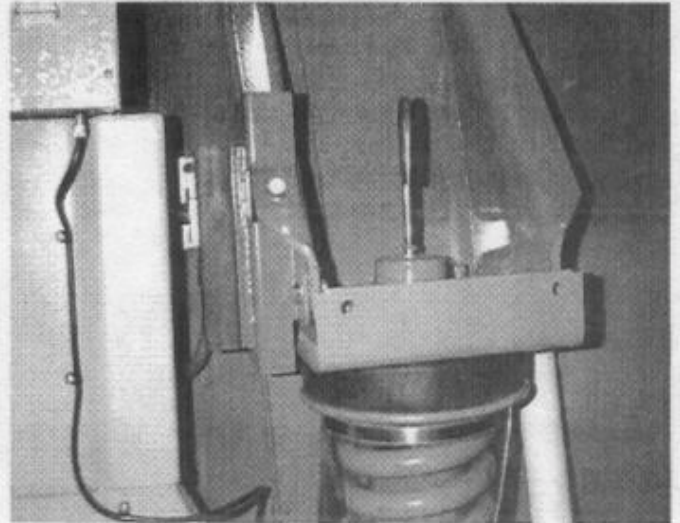
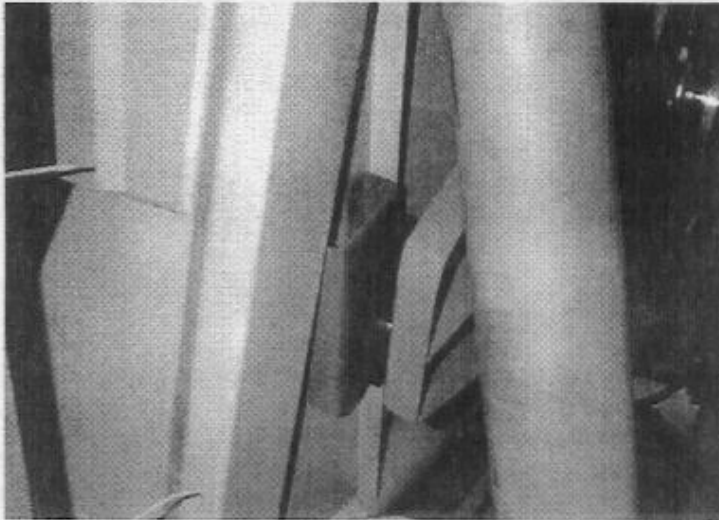
Use this hole of mounting bracket
for rear shock mounting



Use this hole of mounting bracket
for front shock mounting



The four tilt stops are replaced in order to properly align components.



The four isolator assemblies are now filled with 42 ounces (1.25 liters) each with 10W30 motor oil. Replace vent tube.

MILNOR request that all isolator bodies (top & bottom) be returned to MILNOR using a major carrier and freight collect.