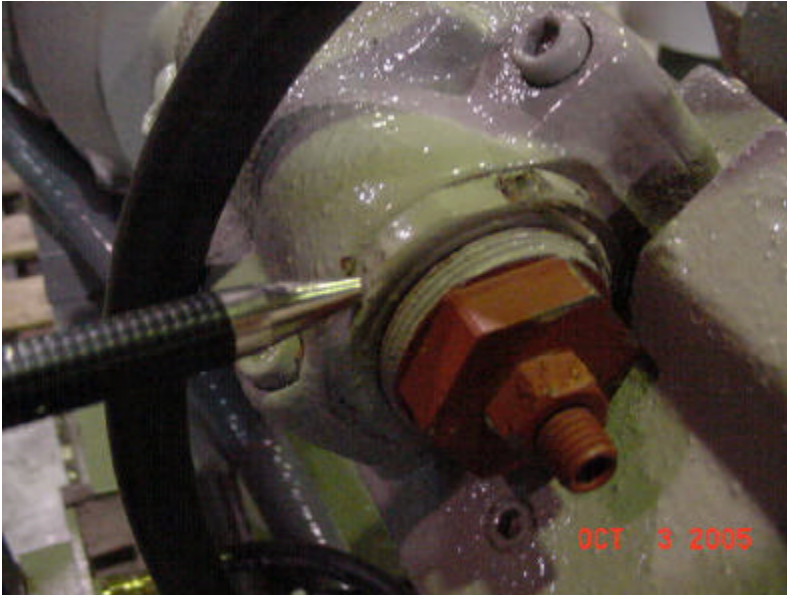


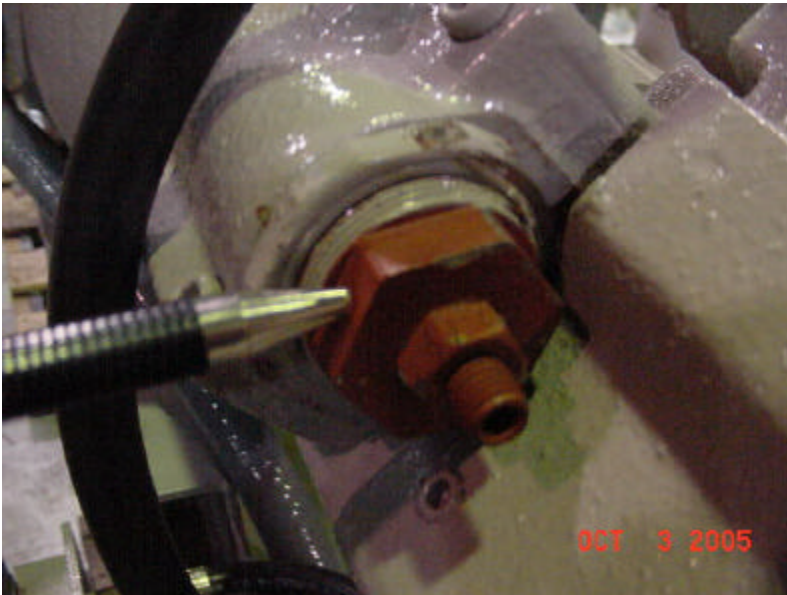
### **Horsepower Limiter Spring change for Milnor Single Stage Press and Centrifugal Extractor Hydraulic Systems**

When replacing a hydraulic pump with a new Kawasaki pump, the horsepower spring may need to be changed in order to operate with a max load of 10 HP. The Kawasaki Pump model is K3VL45.

Topic: Horsepower limiter spring change and pump adjustment points.



Picture 1.



Picture 2.

The pen points to the lock collar for the HP limiter spring housing.  
In picture 2 the pen points to the HP spring cap. The lock collar is loosened and then the cap is removed to reveal 2 springs. There is a large diameter spring and small diameter spring.

The large diameter spring is replaced with the alternate spring for lower horsepower operation.

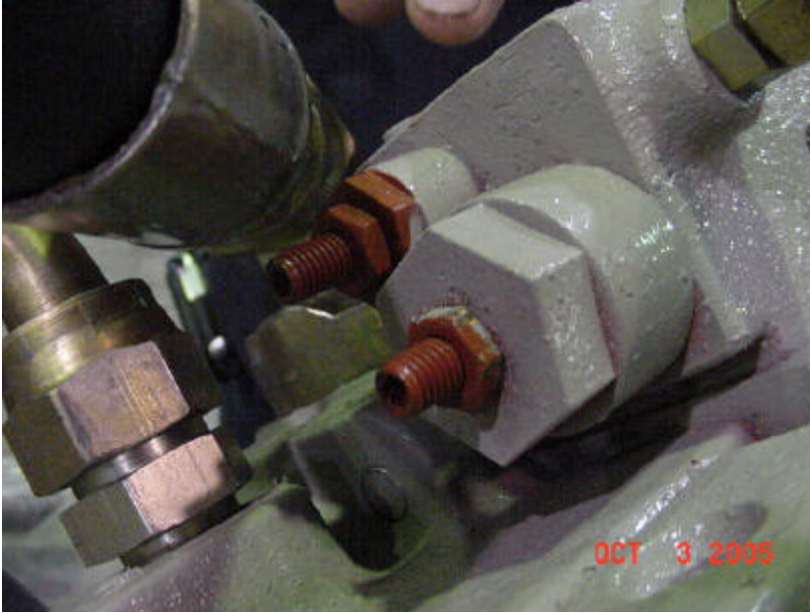
The pump comes out of the box with a spring for the higher horsepower usage, like 15 to 20 HP. The lower HP operation (on some older presses and late model Centrifugal extractors require the spring change.

The two springs are hard to tell apart, so make sure to identify the new spring before taking apart the housing.



Picture 3

Picture 3 shows the high HP spring. When installing the new spring be sure to include the installation of the original small diameter spring into the housing body.



Picture 4

These are the adjustment points for the compensator (on the right with the large nut) and the pump idle adjustment (on the left with the smaller housing nut).