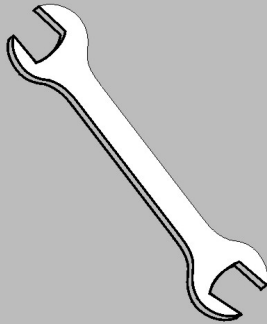


Published Manual Number/ECN: HBB4C00100/2003333A

- Publishing System: TPAS
- Access date: 08/12/03
- Document ECN's: Exact



Kit Instruction— KBB4C00101



PELLERIN MILNOR CORPORATION POST OFFICE BOX 400, KENNER, LOUISIANA 70063-0400, U.S.A.

Please Read

About the Manual Identifying Information on the Cover

The front cover displays pertinent identifying information for this manual. Most important, are the published manual number (part number) /ECN (date code). Generally, when a replacement manual is furnished, it will have the same published manual number, but the latest available ECN. This provides the user with the latest information applicable to his machine. Similarly all documents comprising the manual will be the latest available as of the date the manual was printed, **even though older ECN dates for those documents may be listed in the table of contents.**

When communicating with the Milnor factory regarding this manual, please also provide the other identifying information shown on the cover, including the publishing system, access date, and whether the document ECN's are the latest available or exact.

References to Yellow Troubleshooting Pages

This manual may contain references to "yellow pages." Although the pages containing troubleshooting procedures are no longer printed on yellow paper, troubleshooting instructions, if any, will be contained in the easily located "Troubleshooting" chapter or section. See the table of contents.

Trademarks of Pellerin Milnor Corporation

The following, some of which may be used in this manual, are trademarks of Pellerin Milnor Corporation:

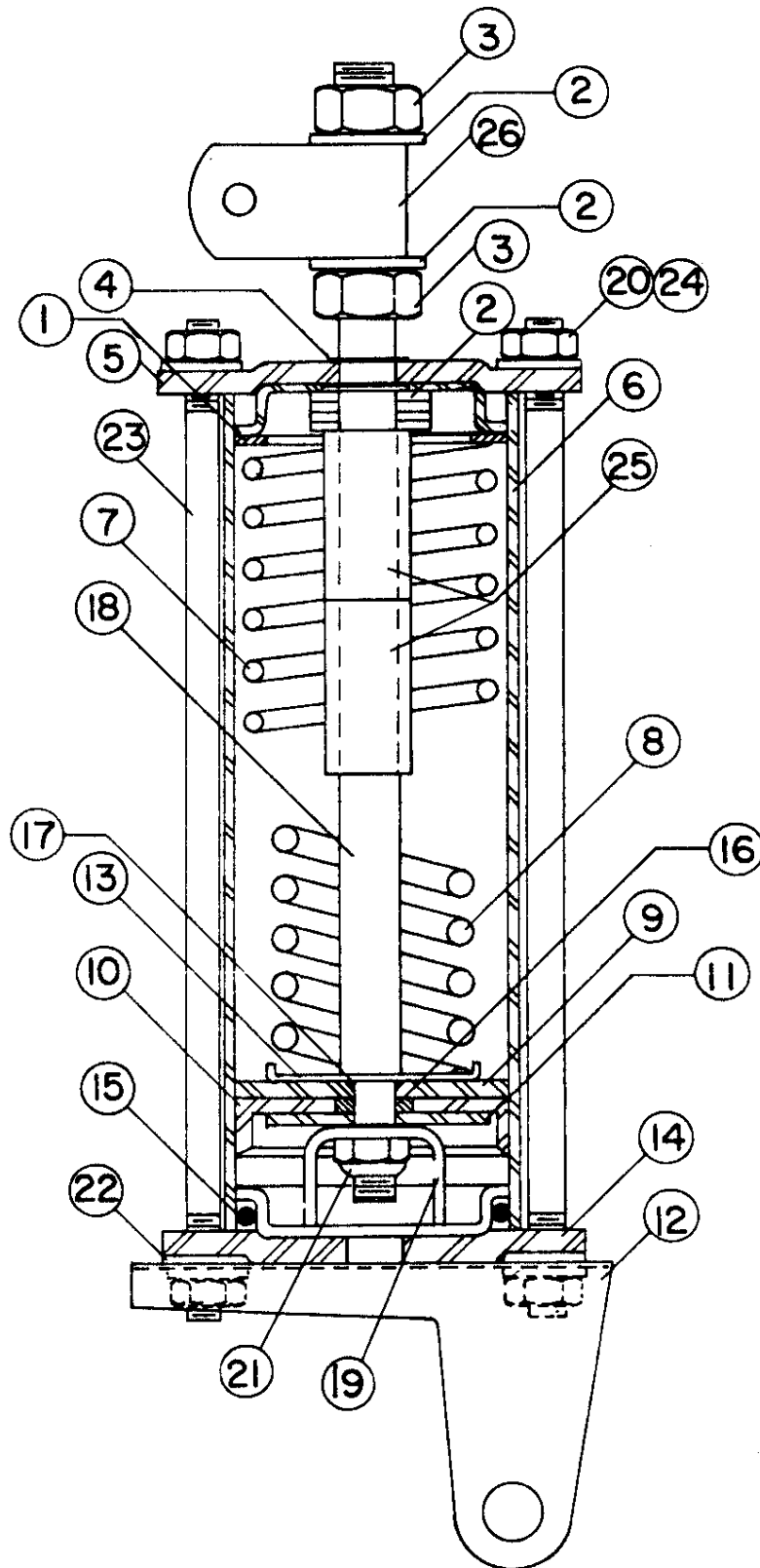
Ampsaver [®]	Dye-Extractor [®]	Gear Guardian [®]	Milnet [®]	Staph-Guard [®]
Autolint [®]	Dyextractor [®]	Hands-Off [®]	Milnor [®]	System 4 [®]
Auto-Purge [®]	E-P Express [®]	Hydro-Cushion [®]	Miltrac	System 7 [®]
Autovac	E-P OneTouch [®]	Mildata [®]	Miltron	Totaltrol [®]
CBW [®]	E-P Plus [®]			

Comments and Suggestions

Help us to improve this manual by sending your comments to:

Pellerin Milnor Corporation
Attn: Technical Publications
P. O. Box 400
Kenner, LA 70063-0400

Fax: (504) 469-1849



BALL VALVE AIR CYLINDER ASSEMBLY PELLERIN MILNOR CORPORATION

Litho. in U.S.A.

BMP701626
72516B

BALL VALVE AIR CYLINDER ASSEMBLY

PARTS LIST

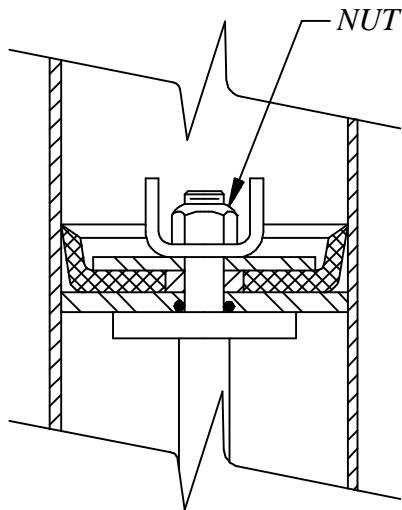
ITEM	DESCRIPTION	PART NO.
1.	WASHER	15U520
2.	WASHER, FLAT	15U243
3.	NUT, 1/2"-13NC2	15G230
4.	NYLINER	54E220
5.	CYLINDER HEAD	02-02546
6.	CYLINDER	02-02068A
7.	SPRING, BRAKE, OUTER	02-15881
8.	SPRING, BRAKE, INNER	02-15880
9.	WASHER, PISTON CUP	02-02105
10.	PISTON CUP	02-02194
11.	WASHER, PISTON CUP, SMALL	02-02085
12.	BRACKET, AIR CYLINDER MOUNTING	02-15688
13.	WASHER, BRAKE CYLINDER	02-18651
14.	CYLINDER HEAD	02-02101
15.	1/4" RING, 2-3/8" O.D. X 2" I.D.	60C132
16.	WASHER, PISTON CUP, BRASS	02-02185
17.	1/4" RING, 7/16" O.D. X 5/16" I.D.	60C106
18.	STEM, PISTON	02-18650
19.	STOP, AIR CYLINDER, 2-11/16" STROKE	03-01313
20.	NUT, HEX, 5/16" NC2	15G185
21.	NUT, STOP, HEX, 3/8"-24NF	15G220
22.	WASHER, FLAT, 5/16"	15U200
23.	ROD, CYLINDER	02-02272
24.	WASHER, LOCKING, 5/16"	15U210
25.	SPACER, .509 I.D. X 1 1/2" LONG	27B250
26.	CLIP, STEM	03-01209



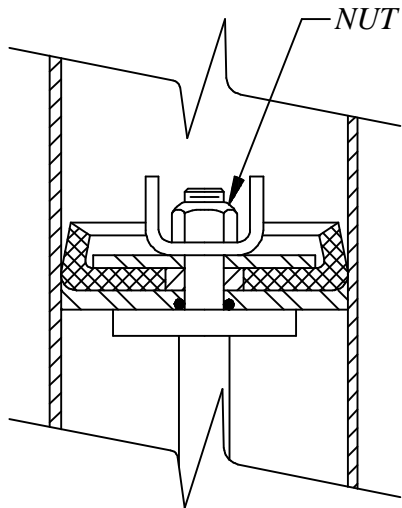
PISTON CUP AND WASHER INSTALLATION

BMP700051/84386V

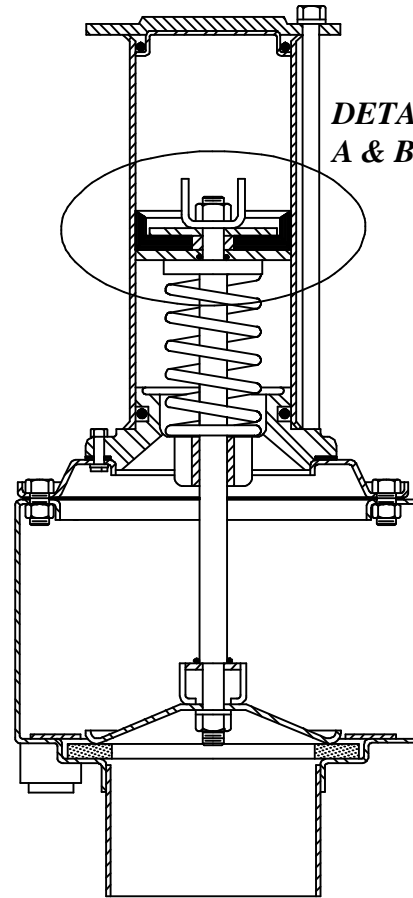
When installing new piston cups in MILNOR automatic dump valves, tighten nut until it is just barely possible to turn the piston cup and washer assembly on the valve. After tightening, the piston cup should appear as shown in Dump Valve Detail A.



**DUMP VALVE
DETAIL A**



**DUMP VALVE
DETAIL B**



DUMP VALVE

Tightening the nut too tight causes the piston cup to extrude to shape shown in Dump Valve Detail B and may cause piston to bind in cylinder.

Note: Nut is self-locking and does not need to be drawn fully tight to lock on to valve stem.