

Published Manual Number/ECN: HHCDV00137/99503N

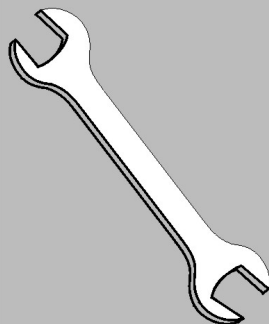
- Publishing System: TPAS
- Access date: 1/22/01
- Document ECN's: Latest Available



Kit Instruction—

KHCDV00137

KHCDV00171



Please Read

About the Manual Identifying Information on the Cover

The front cover displays pertinent identifying information for this manual. Most important, are the published manual number (part number) /ECN (date code). Generally, when a replacement manual is furnished, it will have the same published manual number, but the latest available ECN. This provides the user with the latest information applicable to his machine. Similarly all documents comprising the manual will be the latest available as of the date the manual was printed, **even though older ECN dates for those documents may be listed in the table of contents.**

When communicating with the Milnor factory regarding this manual, please also provide the other identifying information shown on the cover, including the publishing system, access date, and whether the document ECN's are the latest available or exact.

References to Yellow Troubleshooting Pages

This manual may contain references to "yellow pages." Although the pages containing troubleshooting procedures are no longer printed on yellow paper, troubleshooting instructions, if any, will be contained in the easily located "Troubleshooting" chapter or section. See the table of contents.

Trademarks of Pellerin Milnor Corporation

The following, some of which may be used in this manual, are trademarks of Pellerin Milnor Corporation:

| | | | | |
|-------------------------|----------------------------|----------------------------|---------------------|--------------------------|
| Ampsaver [®] | Dye-Extractor [®] | Gear Guardian [®] | Milnet [®] | Staph-Guard [®] |
| Autolint [®] | Dyextractor [®] | Hands-Off [®] | Milnor [®] | System 4 [®] |
| Auto-Purge [®] | E-P Express [®] | Hydro-Cushion [®] | Miltrac | System 7 [®] |
| Autovac | E-P OneTouch [®] | Mildata [®] | Miltron | Totaltrol [®] |
| CBW [®] | E-P Plus [®] | | | |

Comments and Suggestions

Help us to improve this manual by sending your comments to:

Pellerin Milnor Corporation
Attn: Technical Publications
P. O. Box 400
Kenner, LA 70063-0400

Fax: (504) 469-1849

**INSTRUCTIONS TO INSTALL KHCDV00137 AND KHCDV00171
(DEPEND-O-DRAIN) KITS**

All parts associated with the pinch tube drain valve will be removed, including the pipe coupling attachment to the sewer. The Depend-O-Drain retrofit requires a new bracket to mount the valve (provided in the kit). Additionally, the Depend-O-Drain provides a 3" OD hose connection for connection to the sewer. The original pinch tube assembly provided a 2 1/2" male pipe nipple for connection to the sewer. This kit includes a 3" ID hose to connect the drain valve outlet to the sewer.

Please be sure to make provisions for reconnecting the sewer to the machine before attempting this retrofit.

1. Turn power to machine off.
2. Disconnect the drain solenoid.
3. Remove drain valve assembly, pinch tube.
4. Remove pipe nipple and clamp (originally attached to the machine frame).
5. Install sleeve sent with kit (02-03412S) over the shell discharge pipe. This acts as a bushing to increase the diameter to 3" for fit-up purposes.
6. Install one of the 6" hoses (60E303A06A) supplied with kit on shell discharge and clamp.
7. Place mounting bracket (02-03412) on Depend-O-Drain, with motor facing to the right and flange on valve down.
8. Mark the two holes on the valve and drill. (Shipments after April '92 will have predrilled holes for your convenience.)
9. Mount the bracket to drain valve with the bent end toward you with hardware provided.
10. Connect discharge hose from sump to drain valve.

11. Mount valve to machine using holes where original discharge nipple was located.
12. Connect the solenoid wires to motor on valve.
13. Turn power on and test the valve.

DrainValve Installation

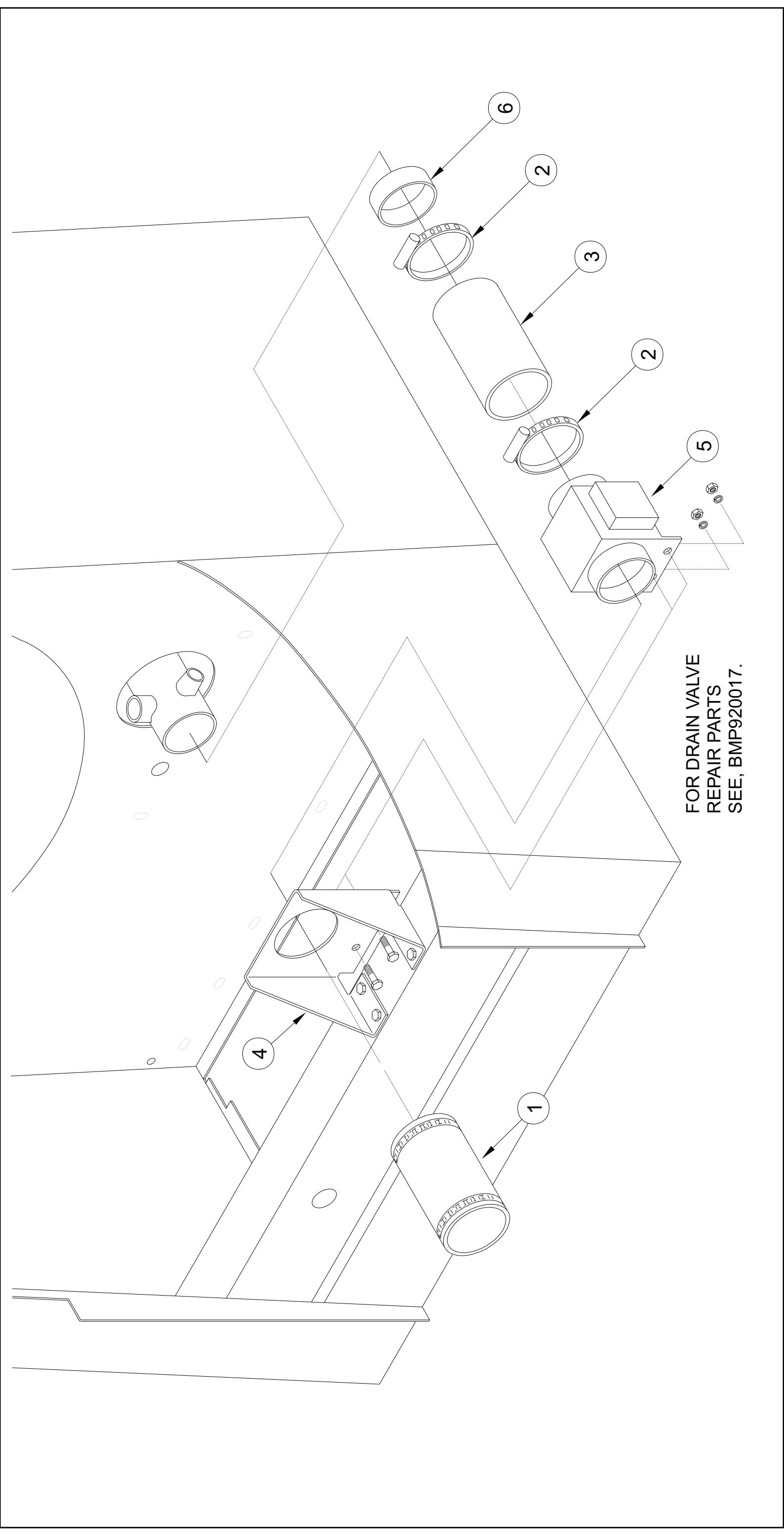
30015, 30020 & 30022 Rigid Mount Washer Extractors

BMP920020/2001036V
(Sheet 1 of 2)



Pellerin Milnor Corporation
P. O. Box 400, Kenner, LA 70063-0400

Litho in U.S.A.





Pellerin Milnor Corporation
P. O. Box 400, Kenner, LA 70063-0400

Litho in U.S.A.

Parts List—Drain Valve Installation

Find the correct assembly first, then find the needed components. The item letters (A, B, C, etc.) assigned to assemblies are referred to in the "Used In" column to identify which components belong to an assembly. The item numbers (1, 2, 3, etc.) assigned to components relate the parts list to the illustration.

| Used In | Item | Part Number | Description | Comments |
|---------|------|-------------|--------------------------------|----------|
| | | | -----ASSEMBLIES----- | |
| | A | AD-33-011S | FLL TUBE & DRAIN ASSY 240V 30V | |
| | | | -----COMPONENTS----- | |
| all | 1 | 60B075 | DFW56-33PMSP RUBB CONN. | |
| all | 2 | 27A082 | HOSECLAMP 2.5625-3.5CADSC#HS48 | |
| all | 3 | 60E303A07A | HOSE=3"ID X 7" LG. | |
| all | 4 | 02 03412 | BRKT=DEPEND-O DUMPVAL MTG | |
| all | 5 | 96D350A71 | DRINVAL 3"MTRDR 240V 50/60C | |
| all | 6 | 02 03412S | SLEEVE=DUMPVALVE HOSE | |